

# Lifting capacities tables

## GMK 2035

Crane Identification Number:



## 1. Informations to the lifting capacities

Contents	1 - 1
Remarks	1 - 3
Counterweight versions	1 - 5
Empty hook tables	1 - 6
Working range - main boom	1 - 9
Working range - swing-away lattice extension	1 - 10

## 2. Lifting capacity tables - main boom

3 014 520/4 521	Fixed lengths	A 6,325x6,20 m	<sup>0° to the rear</sup> 360°	CW 6,0 t	2 - 2
3 014 522/4 523	Intermediate lengths	A 6,325x6,20 m	360°	CW 6,0 t	2 - 4
3 014 524/4 525	Telescoping lengths (extending)	A 6,325x6,20 m	360°	CW 6,0 t	2 - 6
3 014 526/4 527	Telescoping lengths (retracting)	A 6,325x6,20 m	360°	CW 6,0 t	2 - 8
3 014 530/4 531	Fixed lengths	B 6,325x4,40 m	360°	CW 6,0 t	2 - 10
3 014 532/4 533	Intermediate lengths	B 6,325x4,40 m	360°	CW 6,0 t	2 - 12
3 014 534/4 535	Telescoping lengths (extending)	B 6,325x4,40 m	360°	CW 6,0 t	2 - 14
3 014 536/4 537	Telescoping lengths (retracting)	B 6,325x4,40 m	360°	CW 6,0 t	2 - 16
3 014 540/4 541	Fixed lengths	A 6,325x6,20 m	<sup>0° to the rear</sup> 360°	CW 3,0 t	2 - 18
3 014 542/4 543	Intermediate lengths	A 6,325x6,20 m	360°	CW 3,0 t	2 - 20
3 014 544/4 545	Telescoping lengths (extending)	A 6,325x6,20 m	360°	CW 3,0 t	2 - 22
3 014 546/4 547	Telescoping lengths (retracting)	A 6,325x6,20 m	360°	CW 3,0 t	2 - 24
3 014 550/4 551	Fixed lengths	B 6,325x4,40 m	360°	CW 3,0 t	2 - 26
3 014 552/4 553	Intermediate lengths	B 6,325x4,40 m	360°	CW 3,0 t	2 - 28
3 014 554/4 555	Telescoping lengths (extending)	B 6,325x4,40 m	360°	CW 3,0 t	2 - 30
3 014 556/4 557	Telescoping lengths (retracting)	B 6,325x4,40 m	360°	CW 3,0 t	2 - 32
3 014 529	Intermediate lengths	free-on-wheels	0° to the rear	CW 6,0 t	2 - 34
3 014 548	Intermediate lengths	free-on-wheels	360°	CW 3,0 t	2 - 35
3 014 549	Intermediate lengths	free-on-wheels	0° to the rear	CW 3,0 t	2 - 36

## 3. Lifting capacity tables - swing-away lattice extension

3 014 560	8,5 m	Fixed angle	5°;	A 6,325x6,20 m	360°	CW 6,0 t	3 - 1
3 014 561	8,5 m	Fixed angle	20°;	A 6,325x6,20 m	360°	CW 6,0 t	3 - 2
3 014 562	8,5 m	Fixed angle	40°;	A 6,325x6,20 m	360°	CW 6,0 t	3 - 3
3 014 566	8,5 m	Intermedi. angle	5° - 20°;	A 6,325x6,20 m	360°	CW 6,0 t	3 - 4
3 014 567	8,5 m	Intermedi. angle	20° - 40°;	A 6,325x6,20 m	360°	CW 6,0 t	3 - 5
3 014 780	8,5 m	luffed load	5° - 20°;	A 6,325x6,20 m	360°	CW 6,0 t	3 - 6
3 014 781	8,5 m	luffed load	20° - 40°;	A 6,325x6,20 m	360°	CW 6,0 t	3 - 7
3 014 563	15,0 m	Fixed angle	5°;	A 6,325x6,20 m	360°	CW 6,0 t	3 - 8
3 014 564	15,0 m	Fixed angle	20°;	A 6,325x6,20 m	360°	CW 6,0 t	3 - 9
3 014 565	15,0 m	Fixed angle	40°;	A 6,325x6,20 m	360°	CW 6,0 t	3 - 10
3 014 568	15,0 m	Intermedi. angle	5° - 20°;	A 6,325x6,20 m	360°	CW 6,0 t	3 - 11
3 014 569	15,0 m	Intermedi. angle	20° - 40°;	A 6,325x6,20 m	360°	CW 6,0 t	3 - 12

3 014 782	15,0 m	luffed load	5° - 20°;	A 6,325x6,20 m	360° CW 6,0 t	3 - 13
3 014 783	15,0 m	luffed load	20° - 40°;	A 6,325x6,20 m	360° CW 6,0 t	3 - 14
3 014 570	8,5 m	Fixed angle	5°;	A 6,325x6,20 m	360° CW 3,0 t	3 - 15
3 014 571	8,5 m	Fixed angle	20°;	A 6,325x6,20 m	360° CW 3,0 t	3 - 16
3 014 572	8,5 m	Fixed angle	40°;	A 6,325x6,20 m	360° CW 3,0 t	3 - 17
3 014 576	8,5 m	Intermedi. angle	5° - 20°;	A 6,325x6,20 m	360° CW 3,0 t	3 - 18
3 014 577	8,5 m	Intermedi. angle	20° - 40°;	A 6,325x6,20 m	360° CW 3,0 t	3 - 19
3 014 790	8,5 m	luffed load	5° - 20°;	A 6,325x6,20 m	360° CW 3,0 t	3 - 20
3 014 791	8,5 m	luffed load	20° - 40°;	A 6,325x6,20 m	360° CW 3,0 t	3 - 21
3 014 573	15,0 m	Fixed angle	5°;	A 6,325x6,20 m	360° CW 3,0 t	3 - 22
3 014 574	15,0 m	Fixed angle	20°;	A 6,325x6,20 m	360° CW 3,0 t	3 - 23
3 014 575	15,0 m	Fixed angle	40°;	A 6,325x6,20 m	360° CW 3,0 t	3 - 24
3 014 578	15,0 m	Intermedi. angle	5° - 20°;	A 6,325x6,20 m	360° CW 3,0 t	3 - 25
3 014 579	15,0 m	Intermedi. angle	20° - 40°;	A 6,325x6,20 m	360° CW 3,0 t	3 - 26
3 014 792	15,0 m	luffed load	5° - 20°;	A 6,325x6,20 m	360° CW 6,0 t	3 - 27
3 014 793	15,0 m	luffed load	20° - 40°;	A 6,325x6,20 m	360° CW 6,0 t	3 - 28

## 1. Informations to the lifting capacities acc. DIN 15019.2 / ISO

The crane is designed as an erection crane in accordance with DIN 15018.1 and 3 (Lifting capacity class H1) drive group IBm in accordance with DIN 15020.1 resp. ISO 4301/2 classification group A1.

**Caution:** If the crane is used for mixed loading and unloading work, the loads must be reduced to 70% of the permitted loads in the lifting capacity tables.



Temperature range: +35°C to -25°C in accordance with information in the operating instructions.

The following lifting capacity tables only are applicable when planning crane operations and operating the crane.

Values stated on other information sheets accompanying each model are not binding.

Special instructions for the lifting capacity tables:

- \* The crane operator must ensure that the values indicated in the lifting capacity tables for load and radius are not exceeded under any circumstances. The safe load indicator (SLI) does not release him from this duty.
- \* It is not permitted to use the SLI as a weighing device.
- \* The intended operating condition if the crane must be set on the SLI (SLI code and reeving mode).

**Caution: Danger of tilting by two-hook operation**



The (SLI) only covers one-hook operation.  
Two-hook operation is not covered by the SLI.

- \* Rope pull 33 kN for main and auxiliary hoist
- \* Stated lifting capacities are only valid for cranes which are level horizontally
- \* Before starting work with the crane ensure that it is level horizontally and check continually that it is still level during operation.  
The position of the outriggers may only be corrected, when the crane is unloaded.
- \* Lifting capacity = load on hook + hook block + lifting tackle
- \*
 

Weight of the hook blocks:	Weight
Hook block (5-sheaves) 30,0 t	0,40 t
Hook block (3-sheaves) 20,0 t	0,25 t
Hook block (1-sheave) 9,0 t	0,12 t

**Caution: Danger of tilting!**



Do not turn the superstructure when the carrier is not supported with the outriggers.

- \* When the 8,5/15,0 m swing-away lattice extension is folded against the main boom the lifting capacity of the main boom is reduced as follows:

	on outriggers	free on wheels
Boomlengths 8,9 - 12,3 m	200 kg	300 kg
Boomlengths > 12,3 - 15,6 m	100 kg	--
Boomlengths > 18,9 - 29,0 m	50 kg	--

**Caution: Danger of overloading and overturning!**



Loads can be lifted with the main boom if the 8,5 / 15,0 m two stage swing-away lattice extension is installed on the main boom head.

This kind of crane work is only permitted if there is a large outrigger span „A“ and a counter-weight version which is sufficient for swing-away lattice extension operation.

- \* With a pre-locked 8,5 / 15,0 m two-stage swing-away lattice extension, the lifting capacity of the main boom is reduced by the values in the following two tables. The max. permitted wind speed is also reduced to the values in the following two tables. These values will not be given correctly in the SLI status display. The SLI must therefore never be used for weighing in this rigging mode.

*With 8,5 m swing-away lattice extension:*

	max. permitted wind speed	Swing-away lattice extension (angle of inclination 5°)		
		without hookblock	with hookblock	
			9,0 t (120 kg)	20,0 t (250 kg)
Boomlengths 8,3 - 12,3 m	10 m/s	1 400 kg	1 900 kg	2 400 kg
Boomlengths >12,3 - 15,6 m	10 m/s	1 300 kg	1 700 kg	2 300 kg
Boomlengths >15,6 - 18,9 m	10 m/s	1 200 kg	1 600 kg	2 100 kg
Boomlengths >18,9 - 22,4 m	10 m/s	1 200 kg	1 500 kg	2 000 kg
Boomlengths >22,4 - 25,7 m	10 m/s	1 100 kg	1 400 kg	1 800 kg
Boomlengths >25,7 - 29,0 m	10 m/s	1 000 kg	1 300 kg	1 600 kg

*With 15,0 m swing-away lattice extension:*

	max. permitted wind speed	Swing-away lattice extension (angle of inclination 5°)		
		without hookblock	with hookblock	
			9,0 t (120 kg)	20,0 t (250 kg)
Boomlengths 8,3 - 12,3 m	10 m/s	2 400 kg	3 200 kg	4 000 kg
Boomlengths >12,3 - 15,6 m	10 m/s	2 200 kg	2 900 kg	3 600 kg
Boomlengths >15,6 - 18,9 m	10 m/s	2 000 kg	2 700 kg	3 300 kg
Boomlengths >18,9 - 22,4 m	10 m/s	2 000 kg	2 600 kg	3 200 kg
Boomlengths >22,4 - 25,7 m	10 m/s	1 800 kg	2 300 kg	2 800 kg
Boomlengths >25,7 - 29,0 m	10 m/s	1 600 kg	2 000 kg	2 500 kg

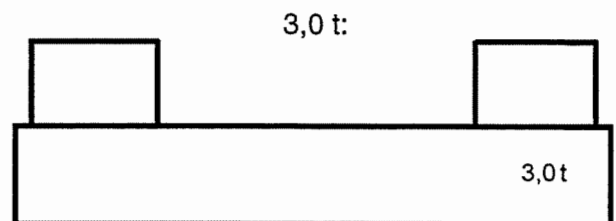
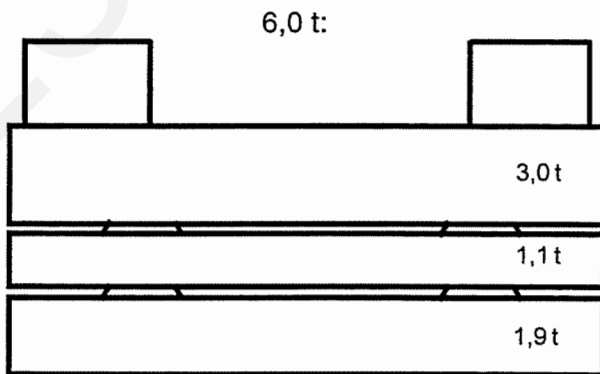
- \* It is not permitted to extend or retract the main with load on the main boom, if the 8,5/15,0 m swing-away lattice extension is installed.
- \* When operating the crane with the 8,5/15,0 m swing-away lattice extension and reeved hook block on the main boom the lifting capacity is reduced as follows:

Swing-away lattice extension	8,5 m	15,0 m
with 30,0 t hook block by	300 kg	250 kg
with 20,0 t hook block by	200 kg	200 kg

- \* Angular adjustment of swing away lattice extension possible in both lowered and raised positions.

**Note:** The angle of swing-away lattice extension must not exceed the angle of the main boom angle.

Permitted counterweight versions:



## Main boom empty hook table

- \* At an angle of more than 30° from the horizontal and no load the main boom can be extended (telescoped out) up to the radius values specified in the following table if:  
Telescoping is monitored by the SLI.

Table - identification-nr.: 3 014 528

Counter-weight	Supporting span (m)	Empty hook max in (t)	Radius in (m)
6,0 t	6,325 x 6,20	2,0	10,0
		1,0	20,0
6,0 t	6,325 x 4,40	2,0	10,0
		1,0	16,0
3,0 t	6,325 x 6,20	2,0	10,0
		1,0	18,0
3,0 t	6,325 x 4,40	2,0	10,0
		1,0	14,0

Empty hook table with SLI coding for two-stage swing-away lattice extension without a load which can be luffed.

\* The main boom can be telescoped without a load and with a front-mounted two-stage swing-away lattice extension to the radii given in the following table.

In the same way, the angle of the two-stage swing-away lattice extension can be changed if the main boom is at a length which is not permitted for operation with the two-stage swing-away lattice extension.

The telescoping of the main boom and adjustment of the two-stage swing-away lattice extension angle is monitored by the SLI.

Table - identification-nr.: 3 014 580 / 3 014 581

Angle of inclination swing-away lattice extension			5° - 20°				20° - 40°			
Telescoping section I			0 - 100	0 - 100	0	100	0 - 100	0 - 100	0	100
Telescoping section II			0	>0	0 - 100	0 - 100	0	>0	0 - 100	0 - 100
Telescoping section III			0	>0	0 - 100	0 - 100	0	>0	0 - 100	0 - 100
Position of main boom			> 20°				> angle of swing-away lattice extension			
Counter-weight	Supporting pan (m)	Empty hook max in (t)	Radius in (m)							
8,5 m swing-away lattice extension										
6,0 t	6,325 x 6,20	1,0	15.0	15.0	24.0	26.0	15.0	15.0	22.0	26.0
		0,6	20.0	20.0	28.0	28.0	20.0	20.0	26.0	28.0
3,0 t	6,325 x 6,20	1,0	15.0	15.0	24.0	22.0	15.0	15.0	22.0	22.0
		0,6	20.0	20.0	26.0	24.0	20.0	20.0	22.0	26.0
15,0 m swing-away lattice extension										
6,0 t	6,325 x 6,20	1,0	15.0	15.0	20.0	24.0	15.0	15.0	20.0	24.0
		0,4	22.0	22.0	32.0	32.0	22.0	22.0	30.0	34.0
3,0 t	6,325 x 6,20	1,0	15.0	15.0	20.0	24.0	15.0	15.0	16.0	24.0
		0,4	22.0	22.0	30.0	28.0	22.0	22.0	30.0	30.0

Empty hook table with SLI coding for two-stage swing-away lattice extension with a load which can be luffed.

\* The main boom can be telescoped without a load and with a front-mounted two-stage swing-away lattice extension to the radii given in the following table.

In the same way, the angle of the two-stage swing-away lattice extension can be changed if the main boom is at a length which is not permitted for operation with the two-stage swing-away lattice extension.

The telescoping of the main boom and adjustment of the two-stage swing-away lattice extension angle is monitored by the SLI.

Table - identification-nr.: 3 014 784 / 3 014 785

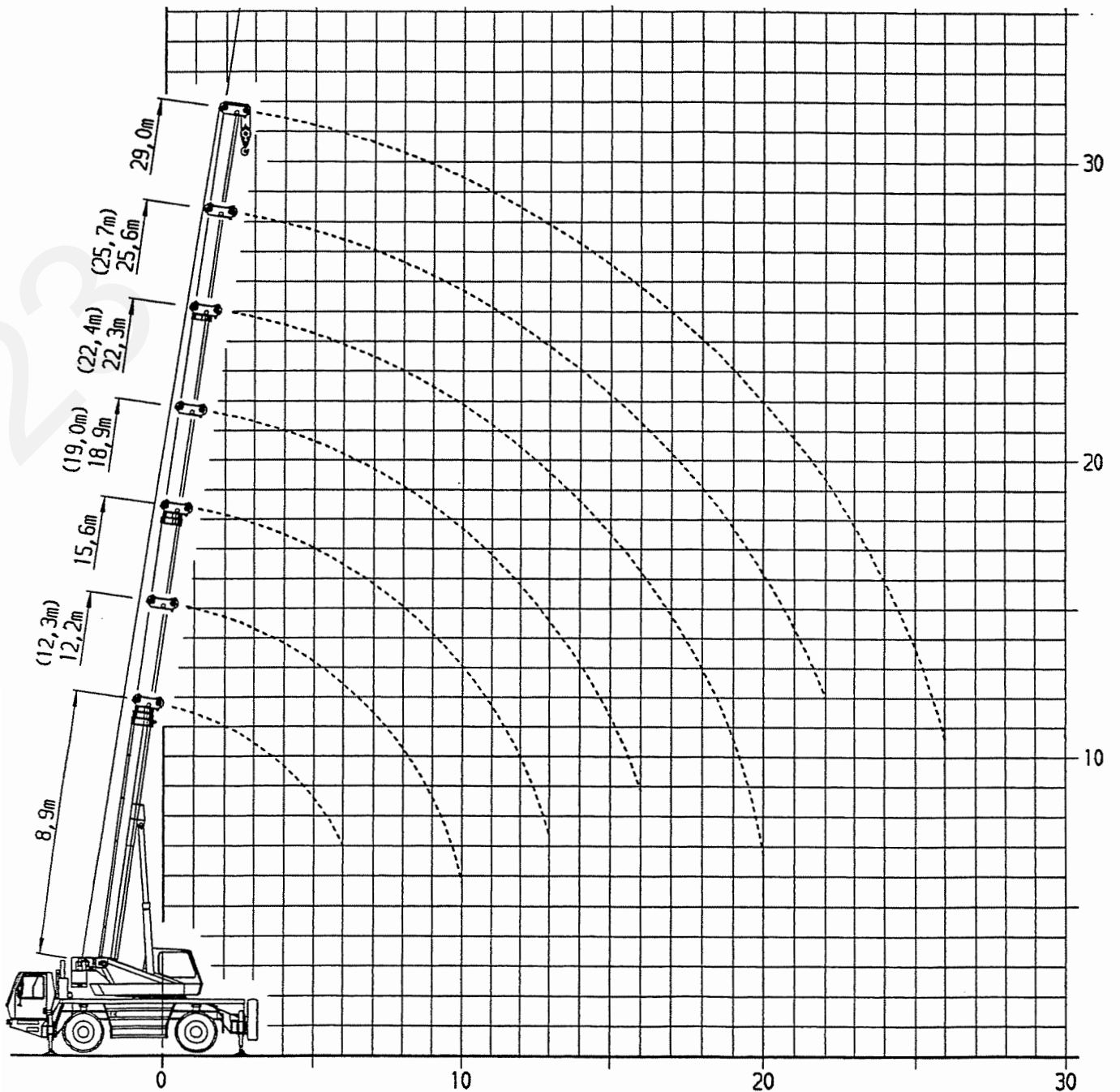
Angle of inclination swing-away lattice extension			5° - 20°				20° - 40°			
Telescoping section I			0 - 100	0 - 100	0	100	0 - 100	0 - 100	0	100
Telescoping section II			0	>0	0 - 100	0 - 100	0	>0	0 - 100	0 - 100
Telescoping section III			0	>0	0 - 100	0 - 100	0	>0	0 - 100	0 - 100
Position of main boom			> 20°				> angle of swing-away lattice extension			
Counterweight	Supporting pan (m)	Empty hook max in (t)	Radius in (m)							
8,5 m swing-away lattice extension										
6,0 t	6,325 x 6,20	0,8	15.0	15.0	24.0	24.0	15.0	15.0	20.0	20.0
		0,6	20.0	20.0	28.0	28.0	20.0	20.0	24.0	24.0
3,0 t		0,8	15.0	15.0	22.0	22.0	15.0	15.0	20.0	20.0
		0,6	20.0	20.0	24.0	22.0	20.0	20.0	22.0	22.0
15,0 m swing-away lattice extension										
6,0 t	6,325 x 6,20	0,8	15.0	15.0	18.0	18.0	15.0	15.0	16.0	16.0
		0,4	22.0	22.0	32.0	32.0	22.0	22.0	30.0	32.0
3,0 t		0,8	15.0	15.0	18.0	18.0	15.0	15.0	15.0	15.0
		0,4	22.0	22.0	28.0	28.0	22.0	22.0	30.0	30.0

Working range - main boom

Hook block			
Lifting capacity in t	30,0	20,0	9,0
Distance H in m	2,8	3,0	2,8



Height (m)



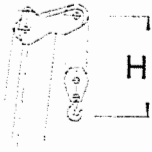
Radius (m)

These working range curves are only valid in conjunction with the radii listed in the lifting capacity tables.

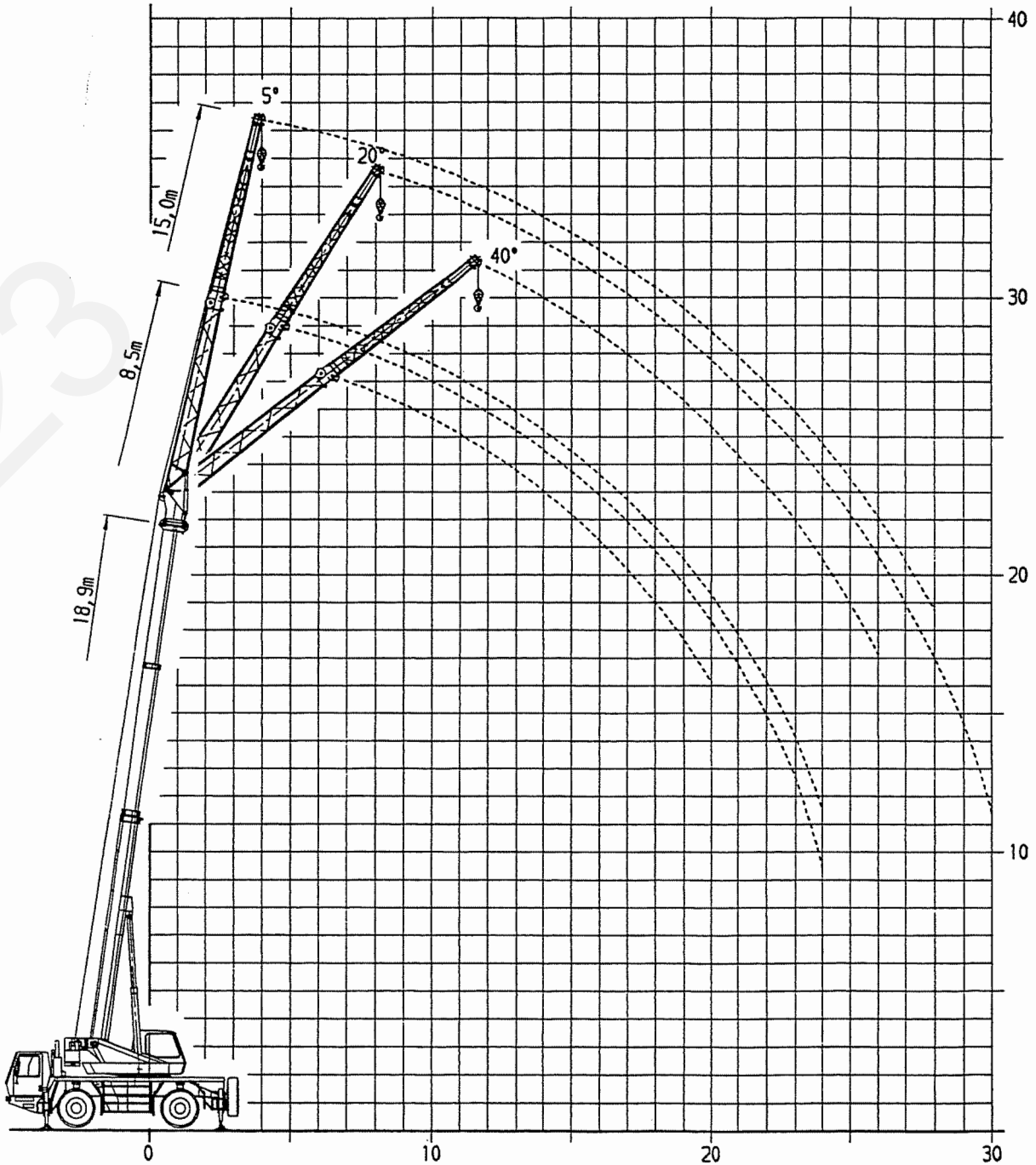
The sheaves heights are calculated theoretically. The actual values deviate from these values due to the deflection of the boom, depending on the load.

Working range - swing-away lattice extension

Hook block	
Lifting capacity in t	9,0
Distance H in m	2,8



Height (m)



Radius (m)

These working range curves are only valid in conjunction with the radii listed in the lifting capacity tables.

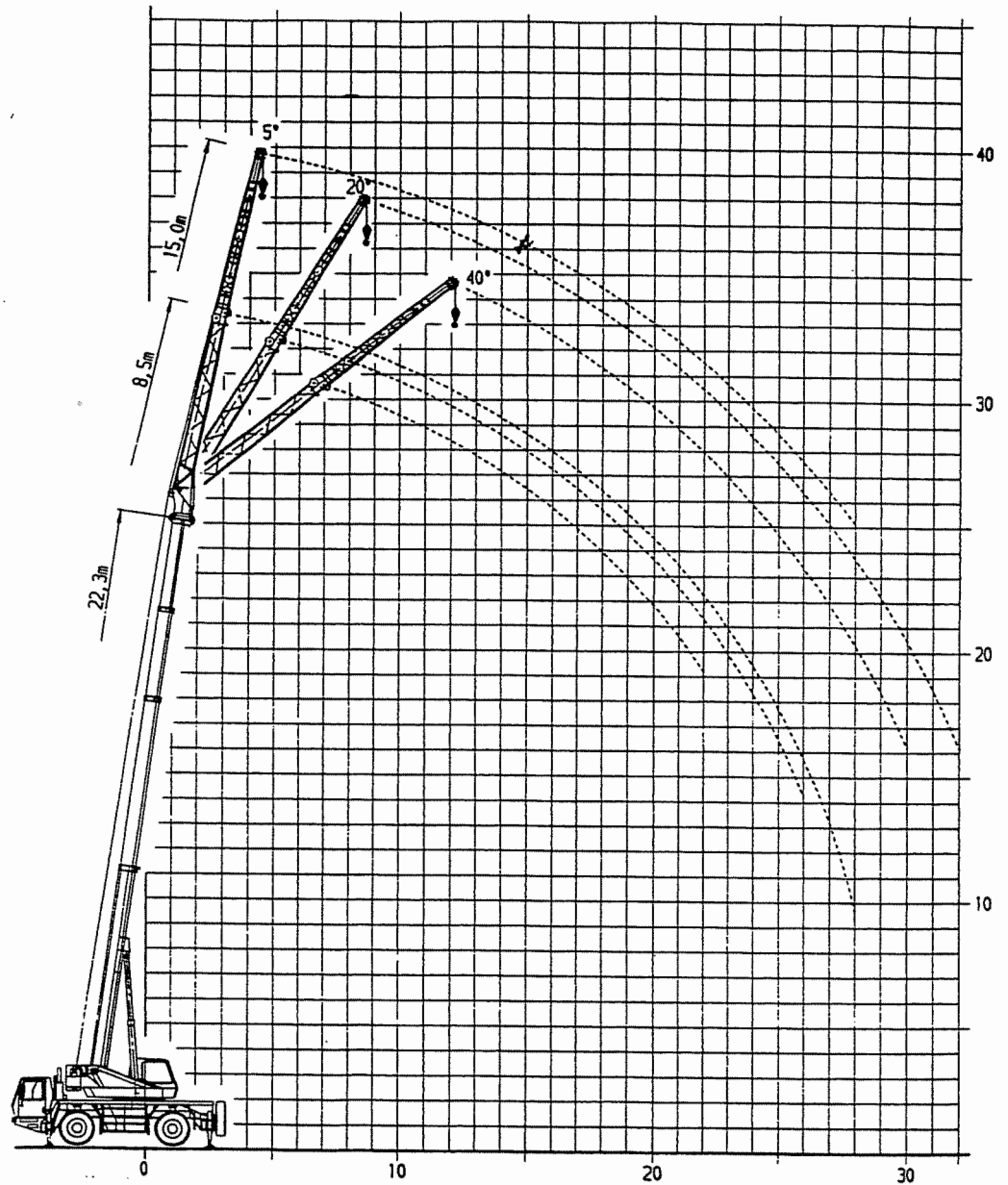
The sheaves heights are calculated theoretically. The actual values deviate from these values due to the deflection of the boom, depending on the load.

Working range - swing-away lattice extension

Hook block	
Lifting capacity in t	9,0
Distance H in m	2,8



Height (m)



Radius (m)

These working range curves are only valid in conjunction with the radii listed in the lifting capacity tables.

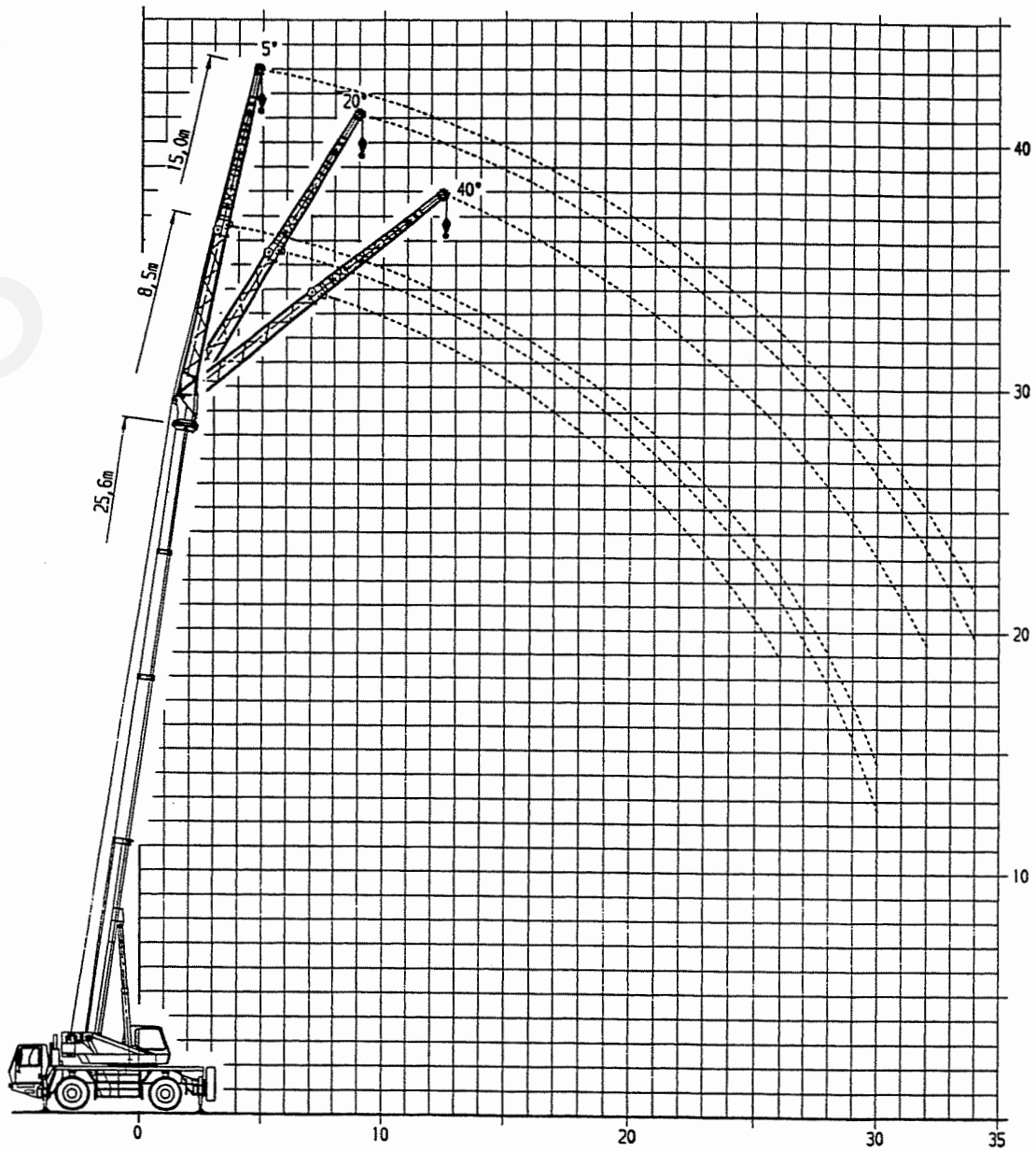
The sheaves heights are calculated theoretically. The actual values deviate from these values due to the deflection of the boom, depending on the load.

Working range - swing-away lattice extension

Hook block	
Lifting capacity in t	9,0
Distance H in m	2,8



Height (m)



Radius (m)

These working range curves are only valid in conjunction with the radii listed in the lifting capacity tables.

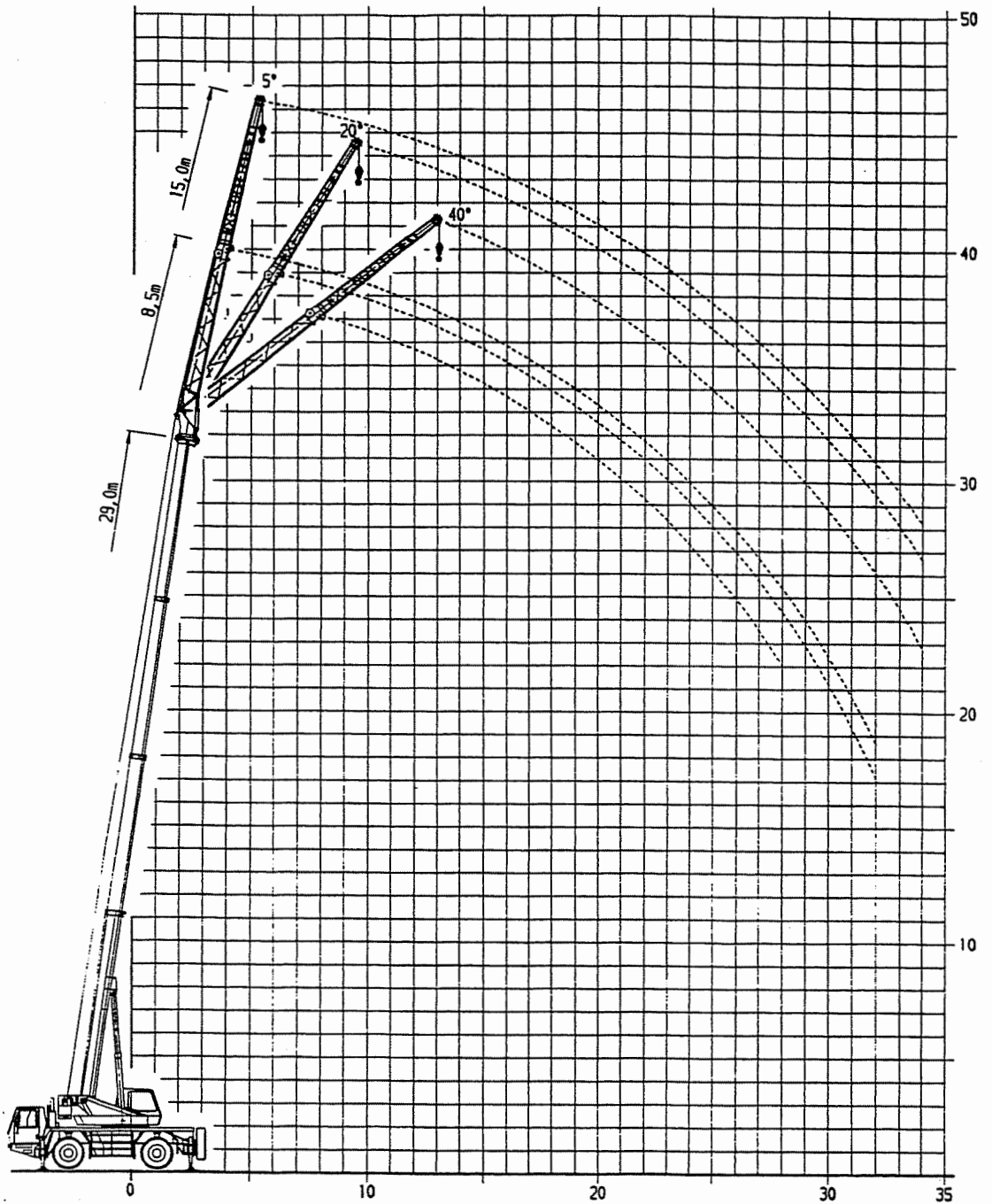
The sheaves heights are calculated theoretically. The actual values deviate from these values due to the deflection of the boom, depending on the load.

Working range - swing-away lattice extension

Hook block	
Lifting capacity in t	9,0
Distance H in m	2,8



Height (m)



Radius (m)

These working range curves are only valid in conjunction with the radii listed in the lifting capacity tables.

The sheaves heights are calculated theoretically. The actual values deviate from these values due to the deflection of the boom, depending on the load.

## 2. Main boom

3 014 520 / 4 521

	Crane with 6,0 t Counterweight (Supporting span 6,325 x 6,200 m)						
	Main boom - fixed lengths in m						
	8,90	8,90	12,20	12,30	15,60	15,60	18,90
Tel. sec. I	0,00	0,00	0,50	0,00	1,00	0,00	1,00
Tel. sec. II	0,00	0,00	0,00	0,25	0,00	0,50	0,25
Tel. sec. III	0,00	0,00	0,00	0,25	0,00	0,50	0,25
Slewing-range	0° to the rear	360°					
Radius in m	Lifting capacity in t						
2,5							
3,0	35,0	31,5	25,0	15,0	20,0	13,0	15,0
4,0	25,5	25,5	23,5	15,0	20,0	13,0	15,0
5,0	20,5	20,5	20,0	15,0	17,8	11,5	15,0
6,0	16,6	16,6	16,4	15,0	15,7	10,2	14,3
7,0			13,6	14,2	13,4	9,1	12,7
8,0			10,7	11,6	10,5	8,2	10,9
9,0			8,7	9,5	8,5	7,6	8,9
10,0			7,3	8,0	7,1	7,0	7,4
11,0					5,9	6,4	6,3
12,0					5,0	6,0	5,4
13,0					4,3	5,3	4,6
14,0							4,0
15,0							3,5
16,0							3,1
SLI - Code	211.0	210.0					
Max. permitted wind speed	14 m/s						

\* Lifting loads &gt; 32,0 t only lift on with additional equipment.

	<b>Crane with 6,0 t Counterweight (Supporting span 6,325 x 6,200 m)</b>					
	Main boom - fixed lengths in m					
	19,00	22,30	22,40	25,60	25,70	29,00
Tel. sec. I	0,00	1,00	0,00	1,00	0,50	1,00
Tel. sec. II	0,75	0,50	1,00	0,75	1,00	1,00
Tel. sec. III	0,75	0,50	1,00	0,75	1,00	1,00
Slewing-range	360°					
Radius in m	Lifting capacity in t					
2,5						
3,0	11,0	13,0				
4,0	11,0	13,0	8,8	10,5	8,8	
5,0	11,0	13,0	8,8	10,5	8,6	8,0
6,0	11,0	12,5	8,8	10,5	7,8	8,0
7,0	10,4	11,5	8,8	9,9	6,9	7,8
8,0	9,4	10,4	7,9	9,2	6,2	7,6
9,0	8,8	9,1	7,3	8,5	5,7	7,4
10,0	8,1	7,6	6,7	7,8	5,2	7,1
11,0	7,1	6,5	6,1	6,6	4,7	6,7
12,0	6,2	5,6	5,7	5,7	4,3	5,9
13,0	5,5	4,8	5,3	5,0	4,0	5,1
14,0	4,8	4,2	4,9	4,4	3,7	4,5
15,0	4,3	3,7	4,4	3,9	3,4	4,0
16,0	3,9	3,3	4,0	3,4	3,2	3,5
18,0		2,6	3,2	2,7	2,7	2,8
20,0		2,0	2,7	2,2	2,4	2,3
22,0				1,7	2,0	1,8
24,0						1,5
26,0						1,2
SLI - Code	210.0					
Max. permitted wind speed	14 m/s					

	<b>Crane with 6,0 t Counterweight (Supporting span 6,325 x 6,200 m)</b>				
	Main boom - Intermediate lengths in m				
	8,9 - 12,2	8,9 - 12,3	12,3 - 15,6	12,3 - 15,6	15,6 - 18,9
Tel. sec. I	0 - 0.50	0	0.50 - 1.00	0	1,00
Tel. sec. II	0	0 - 0.25	0	0.25 - 0.50	0 - 0,25
Tel. sec. III	0	0 - 0.25	0	0.25 - 0.50	0 - 0,25
Slewing-range	360°				
Radius in m	Lifting capacity in t				
3,0	25,0	15,0	14,0	13,0	15,0
4,0	23,5	15,0	11,9	13,0	15,0
5,0	20,0	15,0	10,2	11,5	15,0
6,0	16,4	15,0	8,8	10,2	14,3
7,0	13,6	13,9	7,8	9,1	12,7
8,0	10,7	11,1	7,0	8,2	10,5
9,0	8,7	9,1	6,4	7,6	8,5
10,0	7,3	7,6	5,8	7,0	7,1
11,0			5,2	6,4	5,9
12,0			4,8	5,9	5,0
13,0			4,3	5,2	4,3
14,0					3,7
15,0					3,2
16,0					2,8
SLI - Code	210.0				
Max. permitted wind speed	14 m/s				

\* The above lifting capacity values are monitored automatically by the SLI.

\* The boom must be extended to the required intermediate length before the load is lifted.

3 014 522 / 4 523

	<b>Crane with 6,0 t Counterweight (Supporting span 6,325 x 6,200 m)</b>				
	Main boom - Intermediate lengths in m				
	15,6 - 19,0	18,9 - 22,3	19,0 - 22,4	22,3 - 25,6	25,6 - 29,0
Tel. sec. I	0	1,00	0	1,00	1,00
Tel. sec. II	0,50 - 0,75	0,25 - 0,50	0,75 - 1,00	0,50 - 0,75	0,75 - 1,00
Tel. sec. III	0,50 - 0,75	0,25 - 0,50	0,75 - 1,00	0,50 - 0,75	0,75 - 1,00
Slewing-range	360°				
Radius in m	Lifting capacity in t				
3,0	11,0	13,0	8,8		
4,0	9,4	13,0	8,8	9,5	8,0
5,0	8,1	13,0	8,8	9,5	8,0
6,0	7,2	12,5	8,8	8,8	8,0
7,0	6,4	11,5	8,8	8,1	7,8
8,0	5,7	10,4	7,9	7,3	7,6
9,0	5,3	8,9	7,3	6,8	7,4
10,0	4,8	7,4	6,7	6,2	7,1
11,0	4,4	6,3	6,1	5,7	6,6
12,0	4,1	5,4	5,7	5,4	5,7
13,0	3,8	4,6	5,3	4,8	5,0
14,0	3,5	4,0	4,8	4,2	4,4
15,0	3,3	3,5	4,3	3,7	3,9
16,0	3,0	3,1	3,9	3,3	3,4
18,0		2,4	3,1	2,6	2,7
20,0		1,8	2,6	2,0	2,2
22,0				1,6	1,7
24,0					1,4
26,0					1,1
SLI - Code	<b>210.0</b>				
Max. permitted wind speed	<b>14 m/s</b>				

\* The above lifting capacity values are monitored automatically by the SLI.

\* The boom must be extended to the required intermediate length before the load is lifted.

	<b>Crane with 6,0 t Counterweight (Supporting span 6,325 x 6,200 m)</b>				
	Main boom - telescoping lengths in m (extending)				
	8,9 - 12,2	8,9 - 12,3	12,3 - 15,6	12,3 - 15,6	15,6 - 18,9
Tel. sec. I	0 - 0.50	0	0.50 - 1.00	0	1,00
Tel. sec. II	0	0 - 0.25	0	0.25 - 0.50	0 - 0,25
Tel. sec. III	0	0 - 0.25	0	0.25 - 0.50	0 - 0,25
Slewing-range	360°				
Radius in m	Lifting capacity in t				
3,0	17,5	8,2	12,5	7,6	8,0
4,0	17,5	8,2	11,8	7,6	8,0
5,0	17,5	8,2	10,2	7,6	8,0
6,0	16,4	8,2	8,8	7,6	8,0
7,0	13,6	8,2	7,8	7,6	8,0
8,0	10,7	8,2	7,0	7,6	8,0
9,0	8,7	8,2	6,4	7,6	8,0
10,0	7,3	7,6	5,8	7,0	7,1
11,0			5,2	6,4	5,9
12,0			4,8	5,9	5,0
13,0			4,3	5,2	4,3
14,0					3,7
15,0					3,2
16,0					2,8
SLI - Code	<b>210.0</b>				
Max. permitted wind speed	<b>14 m/s</b>				

- \* The above lifting capacity values are **not** monitored by the SLI.  
The SLI must be adjusted to the SLI-Code of the corresponding supporting span - counterweight version.
- \* The telescopable load depends, however, on the angle of the boom and how well the sliding pads between the telescope sections are lubricated.

3 014 524 / 4 525

	Crane with 6,0 t Counterweight (Supporting span 6,325 x 6,200 m)				
	Main boom - telescoping lengths in m (extending)				
	15,6 - 19,0	18,9 - 22,3	19,0 - 22,4	22,3 - 25,6	25,6 - 29,0
Tel. sec. I	0	1,00	0	1,00	1,00
Tel. sec. II	0,50 - 0,75	0,25 - 0,50	0,75 - 1,00	0,50 - 0,75	0,75 - 1,00
Tel. sec. III	0,50 - 0,75	0,25 - 0,50	0,75 - 1,00	0,50 - 0,75	0,75 - 1,00
Slewing-range	360°				
Radius in m	Lifting capacity in t				
3,0	6,5	7,7			
4,0	6,3	7,6	4,6	6,6	
5,0	6,1	7,5	4,3	6,5	4,8
6,0	6,0	7,5	4,0	6,3	4,5
7,0	5,8	7,5	3,8	6,2	4,3
8,0	5,7	7,5	3,6	6,1	4,1
9,0	5,3	7,5	3,4	6,0	3,9
10,0	4,8	7,4	3,3	5,9	3,7
11,0	4,4	6,3	3,1	5,7	3,6
12,0	4,1	5,4	3,0	5,4	3,5
13,0	3,8	4,6	2,9	4,8	3,3
14,0	3,5	4,0	2,8	4,2	3,2
15,0	3,3	3,5	2,7	3,7	3,1
16,0	3,0	3,1	2,6	3,3	3,0
18,0		2,4	2,5	2,6	2,7
20,0		1,8	2,5	2,0	2,2
22,0				1,6	1,7
24,0					1,4
26,0					1,1
SLI - Code	210.0				
Max. permitted wind speed	14 m/s				

- \* The above lifting capacity values are **not** monitored by the SLI.  
The SLI must be adjusted to the SLI-Code of the corresponding supporting span - counterweight version.
- \* The telescopic load depends, however, on the angle of the boom and how well the sliding pads between the telescope sections are lubricated.

	Crane with 6,0 t Counterweight (Supporting span 6,325 x 6,200 m)				
	Main boom - telescoping lengths in m (retracting)				
	8,9 - 12,2	8,9 - 12,3	12,3 - 15,6	12,3 - 15,6	15,6 - 18,9
Tel. sec. I	0 - 0.50	0	0.50 - 1.00	0	1,00
Tel. sec. II	0	0 - 0.25	0	0.25 - 0.50	0 - 0,25
Tel. sec. III	0	0 - 0.25	0	0.25 - 0.50	0 - 0,25
Slewing-range	360°				
Radius in m	Lifting capacity in t				
3,0	25,0	15,0	14,0	13,0	15,0
4,0	23,5	15,0	11,9	13,0	15,0
5,0	20,0	15,0	10,2	11,5	15,0
6,0	16,4	15,0	8,8	10,2	14,3
7,0	13,6	13,9	7,8	9,1	12,7
8,0	10,7	11,1	7,0	8,2	10,5
9,0	8,7	9,1	6,4	7,6	8,5
10,0	7,3	7,6	5,8	7,0	7,1
11,0			5,2	6,4	5,9
12,0			4,8	5,9	5,0
13,0			4,3	5,2	4,3
14,0					3,7
15,0					3,2
16,0					2,8
SLI - Code	210.0				
Max. permitted wind speed	14 m/s				

\* Obige Teleskopierwerte werden von der LMB **nicht** überwacht.  
Die LMB muß auf den LMB-Code der entsprechenden Stützbasis - Gegengewichtskombination eingestellt werden.

\* Die teleskopierbare Last wird begrenzt durch den Neigungswinkel des Auslegers und durch den Schmierzustand der Gleitstücke zwischen den Teleskopteilen.

3 014 526 / 4 527

	Crane with 6,0 t Counterweight (Supporting span 6,325 x 6,200 m)				
	Main boom - telescoping lengths in m (retracting)				
	15,6 - 19,0	18,9 - 22,3	19,0 - 22,4	22,3 - 25,6	25,6 - 29,0
Tel. sec. I	0	1,00	0	1,00	1,00
Tel. sec. II	0,50 - 0,75	0,25 - 0,50	0,75 - 1,00	0,50 - 0,75	0,75 - 1,00
Tel. sec. III	0,50 - 0,75	0,25 - 0,50	0,75 - 1,00	0,50 - 0,75	0,75 - 1,00
Slewing-range	360°				
Radius in m	Lifting capacity in t				
3,0	11,0	13,0	8,8		
4,0	9,4	13,0	8,8	9,5	8,0
5,0	8,1	13,0	8,8	9,5	8,0
6,0	7,2	12,5	8,8	8,8	8,0
7,0	6,4	11,5	8,8	8,1	7,8
8,0	5,7	10,4	7,9	7,3	7,6
9,0	5,3	8,9	7,3	6,8	7,4
10,0	4,8	7,4	6,7	6,2	7,1
11,0	4,4	6,3	5,5	5,7	6,6
12,0	4,1	5,4	4,2	5,4	5,7
13,0	3,8	4,6	3,4	4,8	5,0
14,0	3,5	4,0	2,7	4,2	4,4
15,0	3,3	3,5	2,2	3,7	3,9
16,0	3,0	3,1	1,9	3,3	3,4
18,0		2,4	1,3	2,6	2,7
20,0		1,8	0,8	2,0	2,2
22,0				1,6	1,7
24,0					1,2
26,0					0,9
SLI - Code	210.0				
Max. permitted wind speed	14 m/s				

\* Obige Teleskopierwerte werden von der LMB **nicht** überwacht.  
Die LMB muß auf den LMB-Code der entsprechenden Stützbasis - Gegengewichtskombination eingestellt werden.

\* Die teleskopierbare Last wird begrenzt durch den Neigungswinkel des Auslegers und durch den Schmierzustand der Gleitstücke zwischen den Teleskopteilen.

	<b>Crane with 6,0 t Counterweight (Supporting span 6,325 x 4,400 m)</b>					
	Main boom - fixed lengths in m					
	8,90	12,20	12,30	15,60	15,60	18,90
Tel. sec. I	0,00	0,50	0,00	1,00	0,00	1,00
Tel. sec. II	0,00	0,00	0,25	0,00	0,50	0,25
Tel. sec. III	0,00	0,00	0,25	0,00	0,50	0,25
Slewing-range	360°					
Radius in m	Lifting capacity in t					
3,0	28,5	25,0	15,0	20,0	13,0	15,0
4,0	23,0	23,0	15,0	20,0	13,0	15,0
5,0	18,4	17,6	15,0	16,2	11,5	15,0
6,0	13,0	12,6	13,5	12,2	10,2	12,0
7,0		9,4	10,3	9,2	9,1	9,5
8,0		7,4	8,2	7,2	8,2	7,6
9,0		6,0	6,7	5,8	6,9	6,1
10,0		4,9	5,6	4,7	5,8	5,0
11,0				3,9	4,9	4,2
12,0				3,2	4,2	3,5
13,0				2,7	3,7	3,0
14,0						2,5
15,0						2,1
16,0						1,8
SLI - Code	212.0					
Max. permitted wind speed	14 m/sec					

3 014 530 / 4 531

	Crane with 6,0 t Counterweight (Supporting span 6,325 x 4,400 m)					
	Main boom - fixed lengths in m					
	19,00	22,30	22,40	25,60	25,70	29,00
Tel. sec. I	0,00	1,00	0,00	1,00	0,50	1,00
Tel. sec. II	0,75	0,50	1,00	0,75	1,00	1,00
Tel. sec. III	0,75	0,50	1,00	0,75	1,00	1,00
Slewing-range	360°					
Radius in m	Lifting capacity in t					
3,0	11,0	13,0				
4,0	11,0	13,0	8,8	10,5	8,8	
5,0	11,0	13,0	8,8	10,5	8,6	8,0
6,0	11,0	11,8	8,8	10,5	7,8	8,0
7,0	10,4	9,4	8,8	9,3	6,9	7,8
8,0	8,6	7,8	7,9	7,7	6,2	7,6
9,0	7,0	6,3	7,2	6,5	5,7	6,4
10,0	5,9	5,2	6,0	5,4	5,2	5,5
11,0	5,0	4,4	5,1	4,6	4,7	4,7
12,0	4,4	3,7	4,4	3,9	4,2	4,0
13,0	3,8	3,2	3,9	3,3	3,6	3,4
14,0	3,3	2,7	3,4	2,9	3,2	3,0
15,0	2,9	2,3	3,0	2,5	2,8	2,6
16,0	2,6	2,0	2,7	2,1	2,4	2,3
18,0		1,5	2,1	1,6	1,9	1,7
20,0		1,0	1,7	1,2	1,5	1,3
22,0				0,9	1,1	1,0
24,0						0,7
SLI - Code	212.0					
Max. permitted wind speed	14 m/sec					

	<b>Crane with 6,0 t Counterweight (Supporting span 6,325 x 4,400 m)</b>				
	Main boom - Intermediate lengths in m				
	8,9 - 12,2	8,9 - 12,3	12,3 - 15,6	12,3 - 15,6	15,6 - 18,9
Tel. sec. I	0 - 0.50	0	0.50 - 1.00	0	1,00
Tel. sec. II	0	0 - 0.25	0	0.25 - 0.50	0 - 0,25
Tel. sec. III	0	0 - 0.25	0	0.25 - 0.50	0 - 0,25
Slewing-range	360°				
Radius in m	Lifting capacity in t				
3,0	25,0	15,0	14,0	13,0	15,0
4,0	23,0	15,0	11,9	13,0	15,0
5,0	17,6	15,0	10,2	11,5	15,0
6,0	12,6	13,0	8,8	10,2	11,5
7,0	9,4	9,8	7,8	9,1	9,1
8,0	7,4	7,8	7,0	8,2	7,2
9,0	6,0	6,3	5,8	6,7	5,8
10,0	4,9	5,2	4,7	5,6	4,7
11,0			3,9	4,7	3,9
12,0			3,2	4,0	3,2
13,0			2,7	3,5	2,7
14,0					2,2
15,0					1,8
16,0					1,5
SLI - Code	<b>212.0</b>				
Max. permitted wind speed	<b>14 m/s</b>				

\* The above lifting capacity values are monitored automatically by the SLI.

\* The boom must be extended to the required intermediate length before the load is lifted.

3 014 532 / 4 533

	<b>Crane with 6,0 t Counterweight (Supporting span 6,325 x 4,400 m)</b>				
	Main boom - Intermediate lengths in m				
	15,6 - 19,0	18,9 - 22,3	19,0 - 22,4	22,3 - 25,6	25,6 - 29,0
Tel. sec. I	0	1.00	0	1.00	1.00
Tel. sec. II	0.50 - 0.75	0.25 - 0.50	0.75 - 1.00	0.50 - 0.75	0.75 - 1.00
Tel. sec. III	0.50 - 0.75	0.25 - 0.50	0.75 - 1.00	0.50 - 0.75	0.75 - 1.00
Slewing-range	360°				
Radius in m	Lifting capacity in t				
3,0	11,0	13,0	8,8		
4,0	9,4	13,0	8,8	9,5	8,0
5,0	8,1	13,0	8,8	9,5	8,0
6,0	7,2	11,4	8,8	8,8	8,0
7,0	6,4	9,1	8,8	8,1	7,8
8,0	5,7	7,5	7,9	7,3	7,4
9,0	5,3	6,1	7,0	6,3	6,3
10,0	4,8	5,0	5,9	5,2	5,4
11,0	4,4	4,2	5,0	4,4	4,6
12,0	4,1	3,5	4,4	3,7	3,9
13,0	3,7	3,0	3,8	3,2	3,3
14,0	3,2	2,5	3,3	2,7	2,9
15,0	2,8	2,1	2,9	2,3	2,5
16,0	2,5	1,8	2,6	2,0	2,1
18,0		1,3	2,0	1,5	1,6
20,0		0,9	1,6	1,0	1,2
22,0				0,7	0,9
24,0					0,6
SLI - Code	<b>212.0</b>				
Max. permitted wind speed	<b>14 m/s</b>				

\* The above lifting capacity values are monitored automatically by the SLI.

\* The boom must be extended to the required intermediate length before the load is lifted.

	<b>Crane with 6,0 t Counterweight (Supporting span 6,325 x 4,400 m)</b>				
	Main boom - telescoping lengths in m (extending)				
	8,9 - 12,2	8,9 - 12,3	12,3 - 15,6	12,3 - 15,6	15,6 - 18,9
Tel. sec. I	0 - 0.50	0	0.50 - 1.00	0	1,00
Tel. sec. II	0	0 - 0.25	0	0.25 - 0.50	0 - 0,25
Tel. sec. III	0	0 - 0.25	0	0.25 - 0.50	0 - 0,25
Slewing-range	360°				
Radius in m	Lifting capacity in t				
3,0	17,5	8,2	12,5	7,6	8,0
4,0	17,5	8,2	11,8	7,6	8,0
5,0	17,5	8,2	10,2	7,6	8,0
6,0	12,6	8,2	8,8	7,6	8,0
7,0	9,4	8,2	7,8	7,6	8,0
8,0	7,4	7,8	7,0	7,6	7,2
9,0	6,0	6,3	5,8	6,7	5,8
10,0	4,9	5,2	4,7	5,6	4,7
11,0			3,9	4,7	3,9
12,0			3,2	4,0	3,2
13,0			2,7	3,5	2,7
14,0					2,2
15,0					1,8
16,0					1,5
SLI - Code	<b>212.0</b>				
Max. permitted wind speed	<b>14 m/s</b>				

- \* The above lifting capacity values are **not** monitored by the SLI.  
The SLI must be adjusted to the SLI-Code of the corresponding supporting span - counterweight version.
- \* The telescopic load depends, however, on the angle of the boom and how well the sliding pads between the telescope sections are lubricated.

3 014 534 / 4 535

	<b>Crane with 6,0 t Counterweight (Supporting span 6,325 x 4,400 m)</b>				
	Main boom - telescoping lengths in m (extending)				
	15,6 - 19,0	18,9 - 22,3	19,0 - 22,4	22,3 - 25,6	25,6 - 29,0
Tel. sec. I	0	1,00	0	1,00	1,00
Tel. sec. II	0,50 - 0,75	0,25 - 0,50	0,75 - 1,00	0,50 - 0,75	0,75 - 1,00
Tel. sec. III	0,50 - 0,75	0,25 - 0,50	0,75 - 1,00	0,50 - 0,75	0,75 - 1,00
Slewing-range	360°				
Radius in m	Lifting capacity in t				
3,0	6,5	7,7			
4,0	6,3	7,6	4,6	6,6	
5,0	6,1	7,5	4,3	6,5	4,8
6,0	6,0	7,5	4,0	6,3	4,5
7,0	5,8	7,5	3,8	6,2	4,3
8,0	5,7	7,5	3,6	6,1	4,1
9,0	5,3	6,1	3,4	6,0	3,9
10,0	4,8	5,0	3,3	5,2	3,7
11,0	4,4	4,2	3,1	4,4	3,6
12,0	4,1	3,5	3,0	3,7	3,5
13,0	3,7	3,0	2,9	3,2	3,3
14,0	3,2	2,5	2,8	2,7	2,9
15,0	2,8	2,1	2,7	2,3	2,5
16,0	2,5	1,8	2,6	2,0	2,1
18,0		1,3	2,0	1,5	1,6
20,0		0,9	1,6	1,0	1,2
22,0				0,7	0,9
24,0					0,6
SLI - Code	<b>212.0</b>				
Max. permitted wind speed	<b>14 m/s</b>				

- \* The above lifting capacity values are **not** monitored by the SLI.  
The SLI must be adjusted to the SLI-Code of the corresponding supporting span - counterweight version.
- \* The telescopic load depends, however, on the angle of the boom and how well the sliding pads between the telescope sections are lubricated.

	Crane with 6,0 t Counterweight (Supporting span 6,325 x 4,400 m)				
	Main boom - telescoping lengths in m (retracting)				
	8,9 - 12,2	8,9 - 12,3	12,3 - 15,6	12,3 - 15,6	15,6 - 18,9
Tel. sec. I	0 - 0.50	0	0.50 - 1.00	0	1,00
Tel. sec. II	0	0 - 0.25	0	0.25 - 0.50	0 - 0,25
Tel. sec. III	0	0 - 0.25	0	0.25 - 0.50	0 - 0,25
Slewing-range	360°				
Radius in m	Lifting capacity in t				
3,0	25,0	15,0	14,0	13,0	15,0
4,0	23,0	15,0	11,9	13,0	15,0
5,0	17,6	15,0	10,2	11,5	15,0
6,0	12,6	13,0	8,8	10,2	11,5
7,0	9,4	9,8	7,8	9,1	9,1
8,0	7,4	7,8	7,0	8,2	7,2
9,0	6,0	6,3	5,8	6,7	5,8
10,0	4,9	5,2	4,7	5,6	4,7
11,0			3,9	4,7	3,9
12,0			3,2	4,0	3,2
13,0			2,7	3,5	2,7
14,0					2,2
15,0					1,8
16,0					1,5
SLI - Code	212.0				
Max. permitted wind speed	14 m/s				

- \* The above lifting capacity values are **not** monitored by the SLI.  
The SLI must be adjusted to the SLI-Code of the corresponding supporting span - counterweight version.
- \* The telescopic load depends, however, on the angle of the boom and how well the sliding pads between the telescope sections are lubricated.

3 014 536 / 4 537

	Crane with 6,0 t Counterweight (Supporting span 6,325 x 4,400 m)				
	Main boom - telescoping lengths in m (retracting)				
	15,6 - 19,0	18,9 - 22,3	19,0 - 22,4	22,3 - 25,6	25,6 - 29,0
Tel. sec. I	0	1,00	0	1,00	1,00
Tel. sec. II	0,50 - 0,75	0,25 - 0,50	0,75 - 1,00	0,50 - 0,75	0,75 - 1,00
Tel. sec. III	0,50 - 0,75	0,25 - 0,50	0,75 - 1,00	0,50 - 0,75	0,75 - 1,00
Slewing-range	360°				
Radius in m	Lifting capacity in t				
3,0	11,0	13,0	8,8		
4,0	9,4	13,0	8,8	9,5	8,0
5,0	8,1	13,0	8,8	9,5	8,0
6,0	7,2	11,4	8,8	8,8	8,0
7,0	6,4	9,1	8,8	8,1	7,8
8,0	5,7	7,5	7,9	7,3	7,4
9,0	5,3	6,1	7,0	6,3	6,3
10,0	4,8	5,0	5,9	5,2	5,4
11,0	4,4	4,2	5,0	4,4	4,6
12,0	4,1	3,5	4,2	3,7	3,9
13,0	3,7	3,0	3,4	3,2	3,3
14,0	3,2	2,5	2,7	2,7	2,9
15,0	2,8	2,1	2,2	2,3	2,5
16,0	2,5	1,8	1,9	2,0	2,1
18,0		1,3	1,3	1,5	1,6
20,0		0,9	0,8	1,0	1,2
22,0				0,7	0,9
24,0					0,6
SLI - Code	212.0				
Max. permitted wind speed	14 m/s				

- \* The above lifting capacity values are **not** monitored by the SLI.  
The SLI must be adjusted to the SLI-Code of the corresponding supporting span - counterweight version.
- \* The telescopic load depends, however, on the angle of the boom and how well the sliding pads between the telescope sections are lubricated.

	<b>Crane with 3,0 t Counterweight (Supporting span 6,325 x 6,200 m)</b>						
	Main boom - fixed lengths in m						
	8,90	8,90	12,20	12,30	15,60	15,60	18,90
Tel. sec. I	0,00	0,00	0,50	0,00	1,00	0,00	1,00
Tel. sec. II	0,00	0,00	0,00	0,25	0,00	0,50	0,25
Tel. sec. III	0,00	0,00	0,00	0,25	0,00	0,50	0,25
Slewing-range	0° to the rear	360°					
Radius in m	Lifting capacity in t						
3,0	33,0	31,0	25,0	15,0	20,0	13,0	15,0
4,0	24,5	24,5	23,5	15,0	20,0	13,0	15,0
5,0	19,0	19,0	18,8	15,0	17,8	11,5	15,0
6,0	15,2	15,2	14,7	15,0	14,2	10,2	14,0
7,0			10,9	11,8	10,7	9,1	11,0
8,0			8,5	9,3	8,3	8,2	8,7
9,0			6,9	7,6	6,7	7,6	7,0
10,0			5,6	6,3	5,4	6,6	5,8
11,0					4,5	5,6	4,8
12,0					3,8	4,8	4,1
13,0					3,2	4,2	3,5
14,0							3,0
15,0							2,5
16,0							2,2
SLI - Code	<b>111.0</b>	<b>110.0</b>					
Max. permitted wind speed	<b>14 m/s</b>						

\* Lifting loads > 32,0 t only lift on with special equipment.

3 014 540 / 4 541

	<b>Crane with 3,0 t Counterweight (Supporting span 6,325 x 6,200 m)</b>					
	Main boom - fixed lengths in m					
	19,00	22,30	22,40	25,60	25,70	29,00
Tel. sec. I	0,00	1,00	0,00	1,00	0,50	1,00
Tel. sec. II	0,75	0,50	1,00	0,75	1,00	1,00
Tel. sec. III	0,75	0,50	1,00	0,75	1,00	1,00
Slewing-range	360°					
Radius in m	Lifting capacity in t					
3,0	11,0	13,0				
4,0	11,0	13,0	8,8	10,5	8,8	
5,0	11,0	13,0	8,8	10,5	8,6	8,0
6,0	11,0	12,5	8,8	10,5	7,8	8,0
7,0	10,4	10,9	8,8	9,9	6,9	7,8
8,0	9,4	8,9	7,9	8,8	6,2	7,6
9,0	8,0	7,3	7,3	7,4	5,7	7,4
10,0	6,7	6,0	6,7	6,2	5,2	6,3
11,0	5,7	5,0	5,8	5,2	4,7	5,3
12,0	4,9	4,3	5,0	4,4	4,3	4,6
13,0	4,3	3,7	4,4	3,8	4,0	4,0
14,0	3,8	3,2	3,9	3,3	3,6	3,4
15,0	3,3	2,7	3,4	2,9	3,2	3,0
16,0	3,0	2,4	3,0	2,5	2,8	2,6
18,0		1,8	2,4	1,9	2,2	2,0
20,0		1,3	2,0	1,5	1,7	1,6
22,0				1,1	1,4	1,2
24,0						0,9
26,0						0,7
SLI - Code	110.0					
Max. permitted wind speed	14 m/s					

	<b>Crane with 3,0 t Counterweight (Supporting span 6,325 x 6,200 m)</b>				
	Main boom - intermediate lengths in m				
	8,9 - 12,2	8,9 - 12,3	12,3 - 15,6	12,3 - 15,6	15,6 - 18,9
Tel. sec. I	0 - 0.50	0	0.50 - 1.00	0	1,00
Tel. sec. II	0	0 - 0.25	0	0.25 - 0.50	0 - 0,25
Tel. sec. III	0	0 - 0.25	0	0.25 - 0.50	0 - 0,25
Slewing-range	360°				
Radius in m	Lifting capacity in t				
3,0	25,0	15,0	14,0	13,0	15,0
4,0	23,5	15,0	11,9	13,0	15,0
5,0	18,8	15,0	10,2	11,5	15,0
6,0	14,7	15,0	8,8	10,2	13,5
7,0	10,9	11,3	7,8	9,1	10,6
8,0	8,5	8,9	7,0	8,2	8,3
9,0	6,9	7,2	6,4	7,6	6,7
10,0	5,6	6,0	5,4	6,3	5,4
11,0			4,5	5,4	4,5
12,0			3,8	4,6	3,8
13,0			2,2	4,0	3,2
14,0					2,7
15,0					2,2
16,0					1,9
SLI - Code	<b>110.0</b>				
Max. permitted wind speed	<b>14 m/s</b>				

\* The above lifting capacity values are monitored automatically by the SLI.

\* The boom must be extended to the required intermediate length before the load is lifted.

3 014 542 / 4 543

	<b>Crane with 3,0 t Counterweight (Supporting span 6,325 x 6,200 m)</b>				
	Main boom - intermediate lengths in m				
	15,6 - 19,0	18,9 - 22,3	19,0 - 22,4	22,3 - 25,6	25,6 - 29,0
Tel. sec. I	0	1.00	0	1.00	1.00
Tel. sec. II	0.50 - 0.75	0.25 - 0.50	0.75 - 1.00	0.50 - 0.75	0.75 - 1.00
Tel. sec. III	0.50 - 0.75	0.25 - 0.50	0.75 - 1.00	0.50 - 0.75	0.75 - 1.00
Slewing-range	360°				
Radius in m	Lifting capacity in t				
3,0	11,0	13,0	8,8		
4,0	9,4	13,0	8,8	9,5	8,0
5,0	8,1	13,0	8,8	9,5	8,0
6,0	7,2	12,5	8,8	8,8	8,0
7,0	6,4	10,6	8,8	8,1	7,8
8,0	5,7	8,7	7,9	7,3	7,6
9,0	5,3	7,0	7,3	6,8	7,2
10,0	4,8	5,8	6,7	6,0	6,2
11,0	4,4	4,8	5,7	5,0	5,2
12,0	4,1	4,1	4,9	4,3	4,4
13,0	3,8	3,5	4,3	3,7	3,8
14,0	3,5	3,0	3,8	3,2	3,3
15,0	3,2	2,5	3,3	2,7	2,9
16,0	2,8	2,2	3,0	2,4	2,5
18,0		1,6	2,4	1,8	1,9
20,0		1,1	1,9	1,3	1,5
22,0				1,0	1,1
24,0					0,8
SLI - Code	110.0				
Max. permitted wind speed	14 m/s				

\* The above lifting capacity values are monitored automatically by the SLI.

\* The boom must be extended to the required intermediate length before the load is lifted.

	Crane with 3,0 t Counterweight (Supporting span 6,325 x 6,200 m)				
	Main boom - telescoping lengths in m (extending)				
	8,9 - 12,2	8,9 - 12,3	12,3 - 15,6	12,3 - 15,6	15,6 - 18,9
Tel. sec. I	0 - 0,50	0	0,50 - 1,00	0	1,00
Tel. sec. II	0	0 - 0,25	0	0,25 - 0,50	0 - 0,25
Tel. sec. III	0	0 - 0,25	0	0,25 - 0,50	0 - 0,25
Slewing-range	360°				
Radius in m	Lifting capacity in t				
3,0	17,5	8,2	12,5	7,6	8,0
4,0	17,5	8,2	11,8	7,6	8,0
5,0	17,5	8,2	10,2	7,6	8,0
6,0	14,7	8,2	8,8	7,6	8,0
7,0	10,9	8,2	7,8	7,6	8,0
8,0	8,5	8,2	7,0	7,6	8,0
9,0	6,9	7,2	6,4	7,6	6,7
10,0	5,6	6,0	5,4	6,3	5,4
11,0			4,5	5,4	4,5
12,0			3,8	4,6	3,8
13,0			3,2	4,0	3,2
14,0					2,7
15,0					2,2
16,0					1,9
SLI - Code	110.0				
Max. permitted wind speed	14 m/s				

\* The above lifting capacity values are **not** monitored by the SLI.  
The SLI must be adjusted to the SLI-Code of the corresponding supporting span - counterweight version.

\* The telescopic load depends, however, on the angle of the boom and how well the sliding pads between the telescope sections are lubricated.

3 014 544 / 4 545

	Crane with 3,0 t Counterweight (Supporting span 6,325 x 6,200 m)				
	Main boom - telescoping lengths in m (extending)				
	15,6 - 19,0	18,9 - 22,3	19,0 - 22,4	22,3 - 25,6	25,6 - 29,0
Tel. sec. I	0	1.00	0	1.00	1.00
Tel. sec. II	0.50 - 0.75	0.25 - 0.50	0.75 - 1.00	0.50 - 0.75	0.75 - 1.00
Tel. sec. III	0.50 - 0.75	0.25 - 0.50	0.75 - 1.00	0.50 - 0.75	0.75 - 1.00
Slewing-range	360°				
Radius in m	Lifting capacity in t				
3,0	6,5	7,7			
4,0	6,3	7,6	4,6	6,6	
5,0	6,1	7,5	4,3	6,5	4,8
6,0	6,0	7,5	4,0	6,3	4,5
7,0	5,8	7,5	3,8	6,2	4,3
8,0	5,7	7,5	3,6	6,1	4,1
9,0	5,3	7,0	3,4	6,0	3,9
10,0	4,8	5,8	3,3	5,9	3,7
11,0	4,4	4,8	3,1	5,0	3,6
12,0	4,1	4,1	3,0	4,3	3,5
13,0	3,8	3,5	2,9	3,7	3,3
14,0	3,5	3,0	2,8	3,2	3,2
15,0	3,2	2,5	2,7	2,7	2,9
16,0	2,8	2,2	2,6	2,4	2,5
18,0		1,6	2,4	1,8	1,9
20,0		1,1	1,9	1,3	1,5
22,0				1,0	1,1
24,0					0,8
SLI - Code	110.0				
Max. permitted wind speed	14 m/s				

\* The above lifting capacity values are **not** monitored by the SLI.  
The SLI must be adjusted to the SLI-Code of the corresponding supporting span - counterweight version.

\* The telescopic load depends, however, on the angle of the boom and how well the sliding pads between the telescope sections are lubricated.

	Crane with 3,0 t Counterweight (Supporting span 6,325 x 6,200 m)				
	Main boom - telescoping lengths in m (retracting)				
	8,9 - 12,2	8,9 - 12,3	12,3 - 15,6	12,3 - 15,6	15,6 - 18,9
Tel. sec. I	0 - 0.50	0	0.50 - 1.00	0	1,00
Tel. sec. II	0	0 - 0.25	0	0.25 - 0.50	0 - 0,25
Tel. sec. III	0	0 - 0.25	0	0.25 - 0.50	0 - 0,25
Slewing-range	360°				
Radius in m	Lifting capacity in t				
3,0	25,0	15,0	14,0	13,0	15,0
4,0	23,5	15,0	11,9	13,0	15,0
5,0	18,8	15,0	10,2	11,5	15,0
6,0	14,7	15,0	8,8	10,2	13,5
7,0	10,9	11,3	7,8	9,1	10,6
8,0	8,5	8,9	7,0	8,2	8,3
9,0	6,9	7,2	6,4	7,6	6,7
10,0	5,6	6,0	5,4	6,3	5,4
11,0			4,5	5,4	4,5
12,0			3,8	4,6	3,8
13,0			3,2	4,0	3,2
14,0					2,7
15,0					2,2
16,0					1,9
SLI - Code	110.0				
Max. permitted wind speed	14 m/s				

- \* The above lifting capacity values are **not** monitored by the SLI.  
The SLI must be adjusted to the SLI-Code of the corresponding supporting span - counterweight version.
- \* The telescopic load depends, however, on the angle of the boom and how well the sliding pads between the telescope sections are lubricated.

3 014 546 / 4 547

	Crane with 3,0 t Counterweight (Supporting span 6,325 x 6,200 m)				
	Main boom - telescoping lengths in m (retracting)				
	15,6 - 19,0	18,9 - 22,3	19,0 - 22,4	22,3 - 25,6	25,6 - 29,0
Tel. sec. I	0	1,00	0	1,00	1,00
Tel. sec. II	0,50 - 0,75	0,25 - 0,50	0,75 - 1,00	0,50 - 0,75	0,75 - 1,00
Tel. sec. III	0,50 - 0,75	0,25 - 0,50	0,75 - 1,00	0,50 - 0,75	0,75 - 1,00
Slewing-range	360°				
Radius in m	Lifting capacity in t				
3,0	11,0	13,0	8,8		
4,0	9,4	13,0	8,8	9,5	8,0
5,0	8,1	13,0	8,8	9,5	8,0
6,0	7,2	12,5	8,8	8,8	8,0
7,0	6,4	10,6	8,8	8,1	7,8
8,0	5,7	8,7	7,9	7,3	7,6
9,0	5,3	7,0	7,3	6,8	7,2
10,0	4,8	5,8	6,7	6,0	6,2
11,0	4,4	4,8	5,5	5,0	5,2
12,0	4,1	4,1	4,2	4,3	4,4
13,0	3,8	3,5	3,4	3,7	3,8
14,0	3,5	3,0	2,7	3,2	3,3
15,0	3,2	2,5	2,2	2,7	2,9
16,0	2,8	2,2	1,9	2,4	2,5
18,0		1,6	1,3	1,8	1,9
20,0		1,1	0,8	1,3	1,5
22,0				1,0	1,1
24,0					0,8
SLI - Code	110.0				
Max. permitted wind speed	14 m/s				

- \* The above lifting capacity values are **not** monitored by the SLI.  
The SLI must be adjusted to the SLI-Code of the corresponding supporting span - counterweight version.
- \* The telescopic load depends, however, on the angle of the boom and how well the sliding pads between the telescope sections are lubricated.

	<b>Crane with 3,0 t Counterweight (Supporting span 6,325 x 4,400 m)</b>					
	Main boom - fixed lengths in m					
	8,90	12,20	12,30	15,60	15,60	18,90
Tel. sec. I	0,00	0,50	0,00	1,00	0,00	1,00
Tel. sec. II	0,00	0,00	0,25	0,00	0,50	0,25
Tel. sec. III	0,00	0,00	0,25	0,00	0,50	0,25
Slewing-range	360°					
Radius in m	Lifting capacity in t					
3,0	28,0	25,0	15,0	20,0	13,0	15,0
4,0	22,0	19,6	15,0	17,7	13,0	15,0
5,0	14,3	13,4	14,5	12,2	11,5	12,0
6,0	9,9	9,5	10,4	9,0	10,2	9,0
7,0		7,0	7,8	6,8	8,1	7,0
8,0		5,4	6,2	5,2	6,4	5,5
9,0		4,2	5,0	4,0	5,2	4,4
10,0		3,4	4,1	3,2	4,3	3,5
11,0				2,5	3,6	2,8
12,0				2,0	3,0	2,3
13,0				1,6	2,6	1,9
14,0						1,5
15,0						1,2
16,0						1,0
SLI - Code	112.0					
Max. permitted wind speed	14 m/s					

3 014 550 / 4 551

	<b>Crane with 3,0 t Counterweight (Supporting span 6,325 x 4,400 m)</b>					
	Main boom - fixed lengths in m					
	19,00	22,30	22,40	25,60	25,70	29,00
Tel. sec. I	0,00	1,00	0,00	1,00	0,50	1,00
Tel. sec. II	0,75	0,50	1,00	0,75	1,00	1,00
Tel. sec. III	0,75	0,50	1,00	0,75	1,00	1,00
Slewing-range	360°					
Radius in m	Lifting capacity in t					
3,0	11,0	13,0				
4,0	11,0	13,0	8,8	10,5	8,8	
5,0	11,0	11,6	8,8	10,5	8,6	8,0
6,0	10,3	8,9	8,8	8,7	7,8	8,0
7,0	8,2	7,0	8,0	6,9	6,9	6,8
8,0	6,5	5,7	6,6	5,7	6,1	5,6
9,0	5,3	4,6	5,4	4,7	5,1	4,7
10,0	4,4	3,7	4,5	3,9	4,3	3,9
11,0	3,7	3,1	3,8	3,2	3,6	3,3
12,0	3,2	2,5	3,3	2,7	3,0	2,8
13,0	2,7	2,1	2,8	2,2	2,6	2,4
14,0	2,3	1,7	2,4	1,9	2,2	2,0
15,0	2,0	1,4	2,1	1,6	1,9	1,7
16,0	1,7	1,1	1,8	1,3	1,6	1,4
18,0		0,7	1,4	0,9	1,2	1,0
20,0			1,0		0,8	0,6
SLI - Code	112.0					
Max. permitted wind speed	14 m/s					

	<b>Crane with 3,0 t Counterweight (Supporting span 6,325 x 4,400 m)</b>				
	Main boom - intermediate lengths in m				
	8,9 - 12,2	8,9 - 12,3	12,3 - 15,6	12,3 - 15,6	15,6 - 18,9
Tel. sec. I	0 - 0.50	0	0.50 - 1.00	0	1,00
Tel. sec. II	0	0 - 0.25	0	0.25 - 0.50	0 - 0,25
Tel. sec. III	0	0 - 0.25	0	0.25 - 0.50	0 - 0,25
Slewing-range	360°				
Radius in m	Lifting capacity in t				
3,0	25,0	15,0	14,0	13,0	15,0
4,0	19,6	15,0	11,9	13,0	15,0
5,0	13,4	13,9	10,2	11,5	11,4
6,0	9,5	9,9	8,8	10,2	8,5
7,0	7,0	7,4	6,8	7,8	6,6
8,0	5,4	5,7	5,2	6,2	5,2
9,0	4,2	4,6	4,0	5,0	4,0
10,0	3,4	3,7	3,2	4,1	3,2
11,0			2,5	3,4	2,5
12,0			2,0	2,8	2,0
13,0			1,6	2,4	1,6
14,0					1,2
15,0					0,9
16,0					0,7
SLI - Code	<b>112.0</b>				
Max. permitted wind speed	<b>14 m/s</b>				

\* The above lifting capacity values are monitored automatically by the SLI.

\* The boom must be extended to the required intermediate length before the load is lifted.

	<b>Crane with 3,0 t Counterweight (Supporting span 6,325 x 4,400 m)</b>				
	Main boom - intermediate lengths in m				
	15,6-19,0	18,9-22,3	19,0-22,4	22,3-25,6	25,6-29,0
Tel. sec. I	0	1,00	0	1,00	1,00
Tel. sec. II	0,50-0,75	0,25-0,50	0,75-1,00	0,50-0,75	0,75-1,00
Tel. sec. III	0,50-0,75	0,25-0,50	0,75-1,00	0,50-0,75	0,75-1,00
Slewing-range	360°				
Radius in m	Lifting capacity in t				
3,0	11,0	13,0	8,8		
4,0	9,4	13,0	8,8	9,5	8,0
5,0	8,1	11,3	8,8	9,5	8,0
6,0	7,2	8,6	8,8	8,5	8,0
7,0	6,4	6,7	7,9	6,7	6,7
8,0	5,7	5,4	6,5	5,4	5,4
9,0	5,2	4,4	5,3	4,5	4,5
10,0	4,3	3,5	4,4	3,7	3,8
11,0	3,6	2,8	3,7	3,1	3,2
12,0	3,0	2,3	3,2	2,5	2,7
13,0	2,6	1,9	2,7	2,1	2,2
14,0	2,2	1,5	2,3	1,7	1,9
15,0	1,9	1,2	2,0	1,4	1,6
16,0	1,6	1,0	1,7	1,1	1,3
18,0			1,3	0,7	0,9
20,0			1,0		
SLI - Code	112.0				
Max. permitted wind speed	14 m/s				

\* The above lifting capacity values are monitored automatically by the SLI.

\* The boom must be extended to the required intermediate length before the load is lifted.

	Crane with 3,0 t Counterweight (Supporting span 6,325 x 4,400 m)				
	Main boom - telescoping lengths in m (extending)				
	8,9 - 12,2	8,9 - 12,3	12,3 - 15,6	12,3 - 15,6	15,6 - 18,9
Tel. sec. I	0 - 0.50	0	0.50 - 1.00	0	1,00
Tel. sec. II	0	0 - 0.25	0	0.25 - 0.50	0 - 0,25
Tel. sec. III	0	0 - 0.25	0	0.25 - 0.50	0 - 0,25
Slewing-range	360°				
Radius in m	Lifting capacity in t				
3,0	17,5	8,2	12,5	7,6	8,0
4,0	17,5	8,2	11,8	7,6	8,0
5,0	13,4	8,2	10,2	7,6	8,0
6,0	9,5	8,2	8,8	7,6	8,0
7,0	7,0	7,4	6,8	7,6	6,6
8,0	5,4	5,7	5,2	6,2	5,2
9,0	4,2	4,6	4,0	5,0	4,0
10,0	3,4	3,7	3,2	4,1	3,2
11,0			2,5	3,4	2,5
12,0			2,0	2,8	2,0
13,0			1,6	2,4	1,6
14,0					1,2
15,0					0,9
16,0					0,7
SLI - Code	112.0				
Max. permitted wind speed	14 m/s				

- \* The above lifting capacity values are **not** monitored by the SLI.  
The SLI must be adjusted to the SLI-Code of the corresponding supporting span - counterweight version.
- \* The telescopic load depends, however, on the angle of the boom and how well the sliding pads between the telescope sections are lubricated.

	Crane with 3,0 t Counterweight (Supporting span 6,325 x 4,400 m)				
	Main boom - telescoping lengths in m (extending)				
	15,6 - 19,0	18,9 - 22,3	19,0 - 22,4	22,3 - 25,6	25,6 - 29,0
Tel. sec. I	0	1,00	0	1,00	1,00
Tel. sec. II	0,50 - 0,75	0,25 - 0,50	0,75 - 1,00	0,50 - 0,75	0,75 - 1,00
Tel. sec. III	0,50 - 0,75	0,25 - 0,50	0,75 - 1,00	0,50 - 0,75	0,75 - 1,00
Slewing-range	360°				
Radius in m	Lifting capacity in t				
3,0	6,5	7,7			
4,0	6,3	7,6	4,6	6,6	
5,0	6,1	7,5	4,3	6,5	4,8
6,0	6,0	7,5	4,0	6,3	4,5
7,0	5,8	6,7	3,8	6,2	4,3
8,0	5,7	5,4	3,6	5,4	4,1
9,0	5,2	4,4	3,4	4,5	3,9
10,0	4,3	3,5	3,3	3,7	3,7
11,0	3,6	2,8	3,1	3,1	3,2
12,0	3,0	2,3	3,0	2,5	2,7
13,0	2,6	1,9	2,7	2,1	2,2
14,0	2,2	1,5	2,3	1,7	1,9
15,0	1,9	1,2	2,0	1,4	1,6
16,0	1,6	1,0	1,7	1,1	1,3
18,0			1,3	0,7	0,9
20,0			1,0		
SLI - Code	112.0				
Max. permitted wind speed	14 m/s				

- \* The above lifting capacity values are **not** monitored by the SLI.  
The SLI must be adjusted to the SLI-Code of the corresponding supporting span - counterweight version.
- \* The telescopic load depends, however, on the angle of the boom and how well the sliding pads between the telescope sections are lubricated.

	Crane with 3,0 t Counterweight (Supporting span 6,325 x 4,400 m)				
	Main boom - telescoping lengths in m (retracting)				
	8,9 - 12,2	8,9 - 12,3	12,3 - 15,6	12,3 - 15,6	15,6 - 18,9
Tel. sec. I	0 - 0.50	0	0.50 - 1.00	0	1,00
Tel. sec. II	0	0 - 0.25	0	0.25 - 0.50	0 - 0,25
Tel. sec. III	0	0 - 0.25	0	0.25 - 0.50	0 - 0,25
Slewing-range	360°				
Radius in m	Lifting capacity in t				
3,0	25,0	15,0	14,0	13,0	15,0
4,0	19,6	15,0	11,9	13,0	15,0
5,0	13,4	13,9	10,2	11,5	11,4
6,0	9,5	9,9	8,8	10,2	8,5
7,0	7,0	7,4	6,8	7,8	6,6
8,0	5,4	5,7	5,2	6,2	5,2
9,0	4,2	4,6	4,0	5,0	4,0
10,0	3,4	3,7	3,2	4,1	3,2
11,0			2,5	3,4	2,5
12,0			2,0	2,8	2,0
13,0			1,6	2,4	1,6
14,0					1,2
15,0					0,9
16,0					0,7
SLI - Code	112.0				
Max. permitted wind speed	14 m/s				

\* Obige Teleskopierwerte werden von der LMB **nicht** überwacht.  
Die LMB muß auf den LMB-Code der entsprechenden Stützbasis - Gegengewichtskombination eingestellt werden.

\* Die teleskopierbare Last wird begrenzt durch den Neigungswinkel des Auslegers und durch den Schmierzustand der Gleitstücke zwischen den Teleskopteilen.

3 014 556 / 4 557

	Crane with 3,0 t Counterweight (Supporting span 6,325 x 4,400 m)				
	Main boom - telescoping lengths in m (retracting)				
	15,6 - 19,0	18,9 - 22,3	19,0 - 22,4	22,3 - 25,6	25,6 - 29,0
Tel. sec. I	0	1,00	0	1,00	1,00
Tel. sec. II	0,50 - 0,75	0,25 - 0,50	0,75 - 1,00	0,50 - 0,75	0,75 - 1,00
Tel. sec. III	0,50 - 0,75	0,25 - 0,50	0,75 - 1,00	0,50 - 0,75	0,75 - 1,00
Slewing-range	360°				
Radius in m	Lifting capacity in t				
3,0	11,0	13,0	8,8		
4,0	9,4	13,0	8,8	9,5	8,0
5,0	8,1	11,3	8,8	9,5	8,0
6,0	7,2	8,6	8,8	8,5	8,0
7,0	6,4	6,7	7,9	6,7	6,7
8,0	5,7	5,4	6,5	5,4	5,4
9,0	5,2	4,4	5,3	4,5	4,5
10,0	4,3	3,5	4,4	3,7	3,8
11,0	3,6	2,8	3,7	3,1	3,2
12,0	3,0	2,3	3,2	2,5	2,7
13,0	2,6	1,9	2,7	2,1	2,2
14,0	2,2	1,5	2,3	1,7	1,9
15,0	1,9	1,2	2,0	1,4	1,6
16,0	1,6	1,0	1,7	1,1	1,3
18,0			1,3	0,7	0,9
20,0			0,8		
SLI - Code	112.0				
Max. permitted wind speed	14 m/s				

\* Obige Teleskopierwerte werden von der LMB **nicht** überwacht.  
Die LMB muß auf den LMB-Code der entsprechenden Stützbasis - Gegengewichtskombination eingestellt werden.

\* Die teleskopierbare Last wird begrenzt durch den Neigungswinkel des Auslegers und durch den Schmierzustand der Gleitstücke zwischen den Teleskopteilen.

	Crane with 6,0 t Counterweight (free on wheels)	
	Main boom - intermediate lengths in m	
	8,9 - 12,3	12,3 - 15,6
Slewing-range	0° to the rear	
Tel. sec. I	0.00	0.00
Tel. sec. II	0 - 0.25	0.25 - 0.50
Tel. sec. III	0 - 0.25	0.25 - 0.50
Radius in m	Lifting capacity in t	
3.0	10,1	10,3
4.0	8,0	8,3
5.0	6,6	6,9
6.0	5,5	5,8
7.0	4,6	4,9
8.0	3,9	4,2
9.0	3,3	3,6
10.0	2,8	3,1
11.0		2,7
12.0		2,4
13.0		2,0
SLI - Code	216.0	
Max. permitted wind speed	14 m/s	

### Working with the crane free-on-wheels

- \* Telescope sections only retracted for the above fixed telescoping
- \* Axle suspension blocked
- \* When the crane is operated free-on-wheels the outrigger beams must be extended respective the reasons of space and the outrigger cylinders must be extended until they are just above the ground.
- \* The boom must be in the position 0° to the rear and the turntable must be locked.
- \* Slewing gear brake engaged
- \* Minimum tyre pressure: 10,0 bar with 14.00 R25 tyres  
9,0 bar with 16.00 R25 tyres

### For driving with loads the following conditions must also be met:

- \* Loads lashed securely
- \* Driving speed: walking pace (0,4 m/sek bzw. 1,5 km/h)

	<b>Crane with 3,0 t Counterweight (free on wheels)</b>	
	Main boom - intermediate lengths in m	
	8,9 - 12,3	12,3 - 15,6
Slewing-range	360°	
Tel. sec. I	0.00	0.00
Tel. sec. II	0 - 0.25	0.25 - 0.50
Tel. sec. III	0 - 0.25	0.25 - 0.50
Radius in m	Lifting capacity in t	
3.0	6,9	7,2
4.0	5,0	5,3
5.0	3,7	4,0
6.0	2,6	3,1
7.0	1,8	2,2
8.0	1,1	1,6
9.0		1,1
SLI - Code	115.0	
Max. permitted wind speed	14 m/s	

### Working with the crane free-on-wheels

- \* Telescope sections only retracted for the above fixed telescoping
- \* Axle suspension blocked
- \* When the crane is operated free-on-wheels the outrigger beams must be extended respective the reasons of space and the outrigger cylinders must be extended until they are just above the ground.
- \* Minimum tyre pressure: 10,0 bar with 14.00 R25 tyres  
9,0 bar with 16.00 R25 tyres

**Notes:** Driving with loads according this table are not allow.

Crane with 3,0 t Counterweight (free on wheels)		
Main boom - intermediate lengths in m		
	8,9 - 12,3	12,3 - 15,6
Slewing-range	0° to the rear	
Tel. sec. I	0.00	0.00
Tel. sec. II	0 - 0.25	0.25 - 0.50
Tel. sec. III	0 - 0.25	0.25 - 0.50
Radius in m	Lifting capacity in t	
3.0	9,8	10,0
4.0	7,8	8,1
5.0	6,4	6,7
6.0	5,3	5,6
7.0	4,0	4,5
8.0	3,1	3,5
9.0	2,4	2,8
10.0	1,8	2,2
11.0		1,8
12.0		1,4
13.0		1,1
SLI - Code	116.0	
Max. permitted wind speed	14 m/s	

### Working with the crane free-on-wheels

- \* Telescope sections only retracted for the above fixed telescoping
- \* Axle suspension blocked
- \* When the crane is operated free-on-wheels the outrigger beams must be extended respective the reasons of space and the outrigger cylinders must be extended until they are just above the ground.
- \* The boom must be in the position 0° to the rear and the turntable must be locked.
- \* Slewing gear brake engaged
- \* Minimum tyre pressure: 10,0 bar with 14.00 R25 tyres  
9,0 bar with 16.00 R25 tyres

### For driving with loads the following conditions must also be met:

- \* Loads lashed securely
- \* Driving speed: walking pace (0,4 m/sek bzw. 1,5 km/h)

## 3. Swing-away lattice extension

3 014 560

	Crane with 6,0 t counterweight (Outrigger span 6,325 x 6,200 m)					
	Lengths of swing-away lattice extension 8,5 m					
	Angle of swing-away lattice extension 5°					
	Main boom - fixed lengths in m					
	18,9	19,0	22,3	22,4	25,6	29,0
Tel. sec. I	1.00	0.00	1.00	0.00	1.00	1.00
Tel. sec. II	0.25	0.75	0.50	1.00	0.75	1.00
Tel. sec. III	0.25	0.75	0.50	1.00	0.75	1.00
Slewing-range	360°					
Radius in m	Lifting capacity in t					
4.0	6,6	5,9				
5.0	6,6	5,9	5,8	5,0	4,5	
6.0	6,6	5,9	5,8	5,0	4,5	3,5
7.0	6,2	5,8	5,8	5,0	4,5	3,5
8.0	5,8	5,4	5,8	4,9	4,5	3,5
9.0	5,4	5,1	5,5	4,8	4,5	3,5
10.0	5,1	4,8	5,2	4,7	4,5	3,5
11.0	4,7	4,5	4,8	4,6	4,5	3,5
12.0	4,5	4,3	4,6	4,3	4,5	3,5
13.0	4,2	4,1	4,4	4,1	4,5	3,5
14.0	4,0	3,9	4,2	3,8	4,4	3,5
15.0	3,8	3,7	4,0	3,5	4,2	3,5
16.0	3,7	3,5	3,7	3,3	3,7	3,5
18.0	2,9	3,2	2,9	2,8	3,0	3,0
20.0	2,3	2,8	2,4	2,5	2,4	2,4
22.0	1,9	2,4	1,9	2,3	1,9	2,0
24.0	1,5	2,0	1,5	2,0	1,6	1,6
26.0			1,2	1,7	1,3	1,3
28.0			1,0	1,4	1,0	1,0
30.0					0,8	0,8
32.0						0,6
SLI - Code	221.0					
Max. permitted wind speed	10m/s					

\* SLI-Code 220.0 for inclination of the swing-away lattice extension.

Crane with 6,0 t counterweight (Outrigger span 6,325 x 6,200 m)						
Lengths of swing-away lattice extension 8,5 m						
Angle of swing-away lattice extension 20°						
Main boom - fixed lengths in m						
	18,9	19,0	22,3	22,4	25,6	29,0
Tel. sec. I	1.00	0.00	1.00	0.00	1.00	1.00
Tel. sec. II	0.25	0.75	0.50	1.00	0.75	1.00
Tel. sec. III	0.25	0.75	0.50	1.00	0.75	1.00
Slewing-range	360°					
Radius in m	Lifting capacity in t					
6.0	4,8	4,7				
7.0	4,6	4,5	4,6	4,5		
8.0	4,4	4,3	4,4	4,3	4,4	
9.0	4,2	4,1	4,3	4,2	4,3	3,5
10.0	4,0	3,9	4,1	4,0	4,1	3,5
11.0	3,8	3,8	3,9	3,8	4,0	3,5
12.0	3,7	3,6	3,8	3,7	3,8	3,5
13.0	3,5	3,5	3,7	3,6	3,7	3,5
14.0	3,3	3,4	3,5	3,5	3,6	3,5
15.0	3,1	3,2	3,4	3,3	3,5	3,5
16.0	3,0	3,1	3,2	3,1	3,4	3,4
18.0	2,9	2,9	3,0	2,8	3,1	3,1
20.0	2,4	2,7	2,5	2,5	2,5	2,6
22.0	2,0	2,4	2,0	2,3	2,1	2,1
24.0	1,5	2,0	1,6	2,0	1,7	1,7
26.0			1,3	1,7	1,3	1,4
28.0					1,0	1,1
30.0					0,8	0,8
32.0						0,6
SLI - Code	221.0					
Max. permitted wind speed	10 m/s					

\* SLI-Code **220.0** for inclination of the swing-away lattice extension.

3 014 562

	Crane with 6,0 t counterweight (Outrigger span 6,325 x 6,200 m)					
	Lengths of swing-away lattice extension 8,5 m					
	Angle of swing-away lattice extension 40°					
	Main boom - fixed lengths in m					
	18,9	19,0	22,3	22,4	25,6	29,0
Tel. sec. I	1.00	0.00	1.00	0.00	1.00	1.00
Tel. sec. II	0.25	0.75	0.50	1.00	0.75	1.00
Tel. sec. III	0.25	0.75	0.50	1.00	0.75	1.00
Slewing-range	360°					
Radius in m	Lifting capacity in t					
8.0	3,4	3,4	3,2			
9.0	3,3	3,2	3,2	3,3	3,3	
10.0	3,1	3,1	3,1	3,1	3,2	3,1
11.0	3,0	3,0	3,0	3,0	3,1	3,1
12.0	2,9	2,9	3,0	2,9	3,0	3,0
13.0	2,9	2,8	2,9	2,9	2,9	2,9
14.0	2,8	2,8	2,9	2,8	2,9	2,9
15.0	2,8	2,8	2,8	2,8	2,8	2,9
16.0	2,7	2,7	2,8	2,8	2,8	2,8
18.0	2,7	2,7	2,7	2,7	2,7	2,7
20.0	2,5	2,6	2,6	2,6	2,7	2,7
22.0			2,1	2,3	2,1	2,2
24.0					1,7	1,8
26.0					1,4	1,4
28.0						1,1
SLI - Code	221.0					
Max. permitted wind speed	10 m/s					

\* SLI-Code **220.0** for inclination of the swing-away lattice extension.

	Crane with 6,0 t Counterweight (Supporting span 6,325 x 6,200 m)					
	Lengths of swing-away lattice extension 8,5 m					
	Angle of telescopic swing-away lattice extension 5° - 20° (Intermediate angle)					
	Main boom - fixed lengths in m					
	18,9	19,0	22,3	22,4	25,6	29,0
Tel. sec. I	1.00	0.00	1.00	0.00	1.00	1.00
Tel. sec. II	0.25	0.75	0.50	1.00	0.75	1.00
Tel. sec. III	0.25	0.75	0.50	1.00	0.75	1.00
Slewing-range	360°					
Radius in m	Lifting capacity in t					
6,0	4,8	4,7				
7,0	4,6	4,5	4,6	4,5		
8,0	4,4	4,3	4,4	4,3	4,4	
9,0	4,2	4,1	4,3	4,2	4,3	3,5
10,0	4,0	3,9	4,1	4,0	4,1	3,5
11,0	3,8	3,8	3,9	3,8	4,0	3,5
12,0	3,7	3,6	3,8	3,7	3,8	3,5
13,0	3,5	3,5	3,7	3,6	3,7	3,5
14,0	3,3	3,4	3,5	3,5	3,6	3,5
15,0	3,1	3,2	3,4	3,3	3,5	3,5
16,0	3,0	3,1	3,2	3,1	3,4	3,4
18,0	2,9	2,9	2,9	2,8	3,0	3,0
20,0	2,3	2,7	2,4	2,5	2,4	2,4
22,0	1,9	2,4	1,9	2,3	1,9	2,0
24,0	1,5	2,0	1,5	2,0	1,6	1,6
26,0			1,2	1,7	1,3	1,3
28,0					1,0	1,0
30,0					0,8	0,8
SLI - Code	221.0					
Max. permitted wind speed	10 m/s					

\* SLI-Code **220.0** for inclination of the telescopic swing-away lattice extension.

\* The swing-away lattice extension must be inclined to the required intermediate angle before the load is lifted.

3 014 567

	Crane with 6,0 t Counterweight (Supporting span 6,325 x 6,200 m)					
	Lengths of swing-away lattice extension 8,5 m					
	Angle of telescopic swing-away lattice extension 20° - 40° (Intermediate angle)					
	Main boom - fixed lengths in m					
	18,9	19,0	22,3	22,4	25,6	29,0
Tel. sec. I	1.00	0.00	1.00	0.00	1.00	1.00
Tel. sec. II	0.25	0.75	0.50	1.00	0.75	1.00
Tel. sec. III	0.25	0.75	0.50	1.00	0.75	1.00
Slewing-range	360°					
Radius in m	Lifting capacity in t					
8.0	3,4	3,4	3,2			
9.0	3,3	3,2	3,2	3,3	3,3	
10.0	3,1	3,1	3,1	3,1	3,2	3,1
11.0	3,0	3,0	3,0	3,0	3,1	3,1
12.0	2,9	2,9	3,0	2,9	3,0	3,0
13.0	2,9	2,8	2,9	2,9	2,9	2,9
14.0	2,8	2,8	2,9	2,8	2,9	2,9
15.0	2,8	2,8	2,8	2,8	2,8	2,9
16.0	2,7	2,7	2,8	2,8	2,8	2,8
18.0	2,7	2,7	2,7	2,7	2,7	2,7
20.0	2,4	2,6	2,5	2,6	2,5	2,6
22.0			2,0	2,3	2,1	2,1
24.0					1,7	1,7
26.0						1,4
28.0						1,1
SLI - Code	221.0					
Max. permitted wind speed	10 m/s					

\* SLI-Code **220.0** for inclination of the telescopic swing-away lattice extension.

\* The swing-away lattice extension must be inclined to the required intermediate angle before the load is lifted.

Crane with 6,0 t Counterweight (Supporting span 6,325 x 6,200 m)						
Lengths of swing-away lattice extension 8,5 m						
Load which can be luffed in angle range of swing-away lattice extension 5° - 20°						
Main boom - fixed lengths in m						
	18,9	19,0	22,3	22,4	25,6	29,0
Tel. sec. I	1.00	0.00	1.00	0.00	1.00	1.00
Tel. sec. II	0.25	0.75	0.50	1.00	0.75	1.00
Tel. sec. III	0.25	0.75	0.50	1.00	0.75	1.00
Slewing-range	360°					
Radius in m	Lifting capacity in t					
6.0	2.6	2.6				
7.0	2.5	2.5	2.6	2.6		
8.0	2.3	2.3	2.4	2.4	2.5	
9.0	2.2	2.2	2.3	2.3	2.4	2.5
10.0	2.1	2.1	2.2	2.2	2.3	2.4
11.0	2.0	2.0	2.1	2.1	2.2	2.3
12.0	1.9	1.9	2.0	2.0	2.1	2.2
13.0	1.8	1.8	1.9	1.9	2.0	2.1
14.0	1.8	1.8	1.9	1.9	2.0	2.0
15.0	1.7	1.7	1.8	1.8	1.9	2.0
16.0	1.6	1.6	1.7	1.7	1.8	1.9
18.0	1.5	1.5	1.6	1.6	1.7	1.8
20.0	1.4	1.5	1.5	1.5	1.6	1.7
22.0	1.3	1.3	1.5	1.5	1.5	1.6
24.0	1.2	1.2	1.4	1.4	1.5	1.5
26.0			1.2	1.3	1.3	1.3
28.0					1.0	1.0
30.0					0.8	0.8
						0.6
SLI - Code	220.0					
Max. permitted wind speed	10 m/s					

\* SLI code **220.0** when inclining the swing-away lattice extension with and without load.

3 014 781

	Crane with 6,0 t Counterweight (Supporting span 6,325 x 6,200 m)					
	Lengths of swing-away lattice extension 8,5 m					
	Load which can be luffed in angle range of swing-away lattice extension 20° - 40°					
	Main boom - fixed lengths in m					
	18,9	19,0	22,3	22,4	25,6	29,0
Tel. sec. I	1.00	0.00	1.00	0.00	1.00	1.00
Tel. sec. II	0.25	0.75	0.50	1.00	0.75	1.00
Tel. sec. III	0.25	0.75	0.50	1.00	0.75	1.00
Slewing-range	360°					
Radius in m	Lifting capacity in t					
8.0	2.0	2.0	2.0			
9.0	1.9	1.9	1.9	1.9	2.0	
10.0	1.8	1.8	1.9	1.9	1.9	1.9
11.0	1.8	1.8	1.8	1.8	1.9	1.9
12.0	1.7	1.7	1.8	1.8	1.8	1.9
13.0	1.7	1.7	1.7	1.7	1.8	1.8
14.0	1.6	1.6	1.7	1.7	1.7	1.8
15.0	1.6	1.6	1.7	1.7	1.7	1.7
16.0	1.6	1.6	1.6	1.6	1.7	1.7
18.0	1.5	1.5	1.6	1.6	1.6	1.6
20.0	1.5	1.5	1.5	1.5	1.6	1.6
22.0			1.5	1.5	1.5	1.6
24.0					1.5	1.5
26.0					1.3	1.4
28.0						1.1
SLI - Code	220.0					
Max. permitted wind speed	10 m/s					

\* SLI code 220.0 when inclining the swing-away lattice extension with and without load.

	Crane with 6,0 t counterweight (Outrigger span 6,325 x 6,200 m)					
	Lengths of swing-away lattice extension 15,0 m					
	Angle of swing-away lattice extension 5°					
	Main boom - fixed lengths in m					
	18,9	19,0	22,3	22,4	25,6	29,0
Tel. sec. I	1.00	0.00	1.00	0.00	1.00	1.00
Tel. sec. II	0.25	0.75	0.50	1.00	0.75	1.00
Tel. sec. III	0.25	0.75	0.50	1.00	0.75	1.00
Slewing-range	360°					
Radius in m	Lifting capacity in t					
6.0	3,3	3,3				
7.0	3,3	3,3	3,1	2,7	2,5	
8.0	3,3	3,3	3,1	2,7	2,5	2,0
9.0	3,2	3,1	3,0	2,7	2,5	2,0
10.0	3,0	2,9	2,9	2,7	2,5	2,0
11.0	2,7	2,7	2,8	2,7	2,5	2,0
12.0	2,6	2,5	2,7	2,6	2,5	2,0
13.0	2,5	2,4	2,5	2,5	2,5	2,0
14.0	2,3	2,3	2,4	2,4	2,5	2,0
15.0	2,2	2,2	2,3	2,3	2,4	2,0
16.0	2,1	2,1	2,2	2,2	2,3	2,0
18.0	1,9	1,9	2,0	2,0	2,1	2,0
20.0	1,8	1,8	1,9	1,9	2,0	2,0
22.0	1,7	1,6	1,8	1,7	1,8	1,9
24.0	1,5	1,5	1,6	1,6	1,7	1,8
26.0	1,4	1,4	1,5	1,5	1,5	1,5
28.0	1,3	1,3	1,3	1,4	1,2	1,2
30.0					1,0	1,0
32.0					0,8	0,8
34,0					0,6	0,6
SLI - Code	231.0					
Max. permitted wind speed	10m/s					

\* SLI-Code 230.0 for inclination of the swing-away lattice extension.

3 014 564

	Crane with 6,0 t counterweight (Outrigger span 6,325 x 6,200 m)					
	Lengths of swing-away lattice extension 15,0 m					
	Angle of swing-away lattice extension 20°					
	Main boom - fixed lengths in m					
	18,9	19,0	22,3	22,4	25,6	29,0
Tel. sec. I	1.00	0.00	1.00	0.00	1.00	1.00
Tel. sec. II	0.25	0.75	0.50	1.00	0.75	1.00
Tel. sec. III	0.25	0.75	0.50	1.00	0.75	1.00
Slewing-range	360°					
Radius in m	Lifting capacity in t					
9.0	2,4					
10.0	2,3	2,2	2,3			
11.0	2,1	2,1	2,2	2,1	2,2	
12.0	2,1	2,0	2,1	2,1	2,1	2,0
13.0	2,0	2,0	2,0	2,0	2,0	2,0
14.0	1,9	1,9	1,9	1,9	2,0	2,0
15.0	1,8	1,8	1,9	1,8	1,9	1,9
16.0	1,8	1,7	1,8	1,8	1,8	1,9
18.0	1,7	1,6	1,7	1,7	1,7	1,8
20.0	1,5	1,5	1,6	1,6	1,6	1,7
22.0	1,5	1,5	1,5	1,5	1,6	1,6
24.0	1,4	1,4	1,5	1,4	1,5	1,5
26.0	1,3	1,3	1,4	1,4	1,4	1,5
28.0	1,3	1,3	1,3	1,3	1,4	1,4
30.0	1,1	1,3	1,1	1,3	1,1	1,1
32.0			0,9	1,2	0,9	0,9
34,0					0,7	0,7
SLI - Code	231.0					
Max. permitted windspeed	10 m/s					

\* SLI-Code **230.0** for inclination of the swing-away lattice extension.

	Crane with 6,0 t counterweight (Outrigger span 6,325 x 6,200 m)					
	Lengths of swing-away lattice extension 15,0 m					
	Angle of swing-away lattice extension 40°					
	Main boom - fixed lengths in m					
	18,9	19,0	22,3	22,4	25,6	29,0
Tel. sec. I	1.00	0.00	1.00	0.00	1.00	1.00
Tel. sec. II	0.25	0.75	0.50	1.00	0.75	1.00
Tel. sec. III	0.25	0.75	0.50	1.00	0.75	1.00
Slewing-range	360°					
Radius in m	Lifting capacity in t					
13.0	1,6	1,6				
14.0	1,6	1,6	1,6	1,6		
15.0	1,5	1,5	1,5	1,5	1,6	
16.0	1,5	1,5	1,5	1,5	1,5	1,5
18.0	1,4	1,4	1,4	1,4	1,5	1,5
20.0	1,4	1,4	1,4	1,4	1,4	1,4
22.0	1,3	1,3	1,3	1,3	1,4	1,4
24.0	1,3	1,3	1,3	1,3	1,3	1,4
26.0	1,3	1,3	1,3	1,3	1,3	1,3
28.0			1,3	1,3	1,3	1,3
30.0			1,2	1,3	1,2	1,2
32.0					1,0	1,0
34,0						0,8
SLI - Code	231.0					
Max. permitted wind speed	10 m/s					

\* SLI-Code **230.0** for inclination of the swing-away lattice extension.

3 014 568

	Crane with 6,0 t Counterweight (Supporting span 6,325 x 6,200 m)					
	Lengths of swing-away lattice extension 15,0 m					
	Angle of telescopic swing-away lattice extension 5° - 20° (Intermediate angle)					
	Main boom - fixed lengths in m					
	18,9	19,0	22,3	22,4	25,6	29,0
Tel. sec. I	1.00	0.00	1.00	0.00	1.00	1.00
Tel. sec. II	0.25	0.75	0.50	1.00	0.75	1.00
Tel. sec. III	0.25	0.75	0.50	1.00	0.75	1.00
Slewing-range	360°					
Radius in m	Lifting capacity in t					
9.0	2,4					
10.0	2,3	2,2	2,3			
11.0	2,1	2,1	2,2	2,1	2,2	
12.0	2,1	2,0	2,1	2,1	2,1	2,1
13.0	2,0	2,0	2,0	2,0	2,0	2,0
14.0	1,9	1,9	1,9	1,9	2,0	2,0
15.0	1,8	1,8	1,9	1,8	1,9	1,9
16.0	1,8	1,7	1,8	1,8	1,8	1,9
18.0	1,7	1,6	1,7	1,7	1,7	1,8
20.0	1,5	1,5	1,6	1,6	1,6	1,7
22.0	1,5	1,5	1,5	1,5	1,6	1,6
24.0	1,4	1,4	1,5	1,4	1,5	1,5
26.0	1,3	1,3	1,4	1,4	1,4	1,5
28.0	1,3	1,3	1,3	1,3	1,2	1,2
30.0	1,0	1,3	1,0	1,3	1,0	1,0
32.0			0,8	1,2	0,8	0,8
34.0			0,6	1,0	0,6	0,6
SLI - Code	231.0					
Max. permitted wind speed	10 m/s					

\* SLI-Code **230.0** for inclination of the telescopic swing-away lattice extension.

\* The swing-away lattice extension must be inclined to the required intermediate angle before the load is lifted.

	Crane with 6,0 t Counterweight (Supporting span 6,325 x 6,200 m)					
	Lengths of swing-away lattice extension 15,0 m					
	Angle of telescopic swing-away lattice extension 20° - 40° (Intermediate angle)					
	Main boom - fixed lengths in m					
	18,9	19,0	22,3	22,4	25,6	29,0
Tel. sec. I	1.00	0.00	1.00	0.00	1.00	1.00
Tel. sec. II	0.25	0.75	0.50	1.00	0.75	1.00
Tel. sec. III	0.25	0.75	0.50	1.00	0.75	1.00
Slewing-range	360°					
Radius in m	Lifting capacity in t					
13.0	1,6	1,6				
14.0	1,6	1,6	1,6	1,6		
15.0	1,5	1,5	1,5	1,5	1,6	
16.0	1,5	1,5	1,5	1,5	1,5	1,5
18.0	1,4	1,4	1,4	1,4	1,5	1,5
20.0	1,4	1,4	1,4	1,4	1,4	1,4
22.0	1,3	1,3	1,3	1,3	1,4	1,4
24.0	1,3	1,3	1,3	1,3	1,3	1,4
26.0	1,3	1,3	1,3	1,3	1,3	1,3
28.0	1,2	1,2	1,3	1,3	1,3	1,3
30,0			1,1	1,3	1,1	1,1
32,0			0,9		0,9	0,9
34,0					0,7	0,7
SLI - Code	231.0					
Max. permitted wind speed	10 m/s					

\* SLI-Code **230.0** for inclination of the telescopic swing-away lattice extension.

\* The swing-away lattice extension must be inclined to the required intermediate angle before the load is lifted.

3 014 782

	Crane with 6,0 t Counterweight (Supporting span 6,325 x 6,200 m)					
	Lengths of swing-away lattice extension 15,0 m					
	Load which can be luffed in angle range of swing-away lattice extension 5° - 20°					
	Main boom - fixed lengths in m					
	18,9	19,0	22,3	22,4	25,6	29,0
Tel. sec. I	1.00	0.00	1.00	0.00	1.00	1.00
Tel. sec. II	0.25	0.75	0.50	1.00	0.75	1.00
Tel. sec. III	0.25	0.75	0.50	1.00	0.75	1.00
Slewing-range	360°					
Radius in m	Lifting capacity in t					
9.0	1.4					
10.0	1.3	1.3	1.3			
11.0	1.2	1.2	1.3	1.3	1.3	
12.0	1.1	1.1	1.2	1.2	1.2	1.3
13.0	1.1	1.1	1.1	1.1	1.2	1.2
14.0	1.0	1.0	1.1	1.1	1.1	1.2
15.0	1.0	1.0	1.0	1.0	1.1	1.1
16.0	0.9	0.9	1.0	1.0	1.0	1.1
18.0	0.9	0.9	0.9	0.9	1.0	1.0
20.0	0.8	0.8	0.8	0.9	0.9	0.9
22.0	0.7	0.7	0.8	0.8	0.8	0.9
24.0	0.7	0.7	0.7	0.7	0.8	0.8
26.0	0.6	0.6	0.7	0.7	0.7	0.8
28.0	0.6	0.6	0.7	0.7	0.7	0.7
30.0					0.7	0.7
32.0					0.6	0.7
34.0					0.6	0.6
SLI - Code	230.0					
Max. permitted wind speed	10 m/s					

\* SLI code **230.0** when inclining the swing-away lattice extension with and without load.

	Crane with 6,0 t Counterweight (Supporting span 6,325 x 6,200 m)					
	Lengths of swing-away lattice extension 15,0 m					
	Load which can be luffed in angle range of swing-away lattice extension 20° - 40°					
	Main boom - fixed lengths in m					
	18,9	19,0	22,3	22,4	25,6	29,0
Tel. sec. I	1.00	0.00	1.00	0.00	1.00	1.00
Tel. sec. II	0.25	0.75	0.50	1.00	0.75	1.00
Tel. sec. III	0.25	0.75	0.50	1.00	0.75	1.00
Slewing-range	360°					
Radius in m	Lifting capacity in t					
13.0	0.9	0.9				
14.0	0.9	0.9	0.9	0.9		
15.0	0.9	0.9	0.9	0.9	0.9	
16.0	0.8	0.8	0.9	0.9	0.9	0.9
18.0	0.8	0.8	0.8	0.8	0.8	0.9
20.0	0.8	0.8	0.8	0.8	0.8	0.8
22.0	0.7	0.7	0.7	0.7	0.8	0.8
24.0	0.7	0.7	0.7	0.7	0.7	0.8
26.0	0.7	0.7	0.7	0.7	0.7	0.7
28.0			0.7	0.7	0.7	0.7
30.0			0.6	0.6	0.7	0.7
32.0					0.6	0.7
34.0						0.6
SLI - Code	230.0					
Max. permitted wind speed	10 m/s					

\* SLI code **230.0** when inclining the swing-away lattice extension with and without load.

3 014 570

	Crane with 3,0 t counterweight (Outrigger span 6,325 x 6,200 m)					
	Lengths of swing-away lattice extension 8,5 m					
	Angle of swing-away lattice extension 5°					
	Main boom - fixed lengths in m					
	18,9	19,0	22,3	22,4	25,6	29,0
Tel. sec. I	1.00	0.00	1.00	0.00	1.00	1.00
Tel. sec. II	0.25	0.75	0.50	1.00	0.75	1.00
Tel. sec. III	0.25	0.75	0.50	1.00	0.75	1.00
Slewing-range	360°					
Radius in m	Lifting capacity in t					
4.0	6,6	5,9				
5.0	6,6	5,9	5,8	5,0	4,5	
6.0	6,6	5,9	5,8	5,0	4,5	3,5
7.0	6,2	5,8	5,8	5,0	4,5	3,5
8.0	5,8	5,4	5,8	4,9	4,5	3,5
9.0	5,4	5,1	5,5	4,8	4,5	3,5
10.0	5,1	4,8	5,2	4,7	4,5	3,5
11.0	4,7	4,5	4,8	4,6	4,5	3,5
12.0	4,5	4,3	4,6	4,3	4,5	3,5
13.0	4,1	4,1	4,2	4,1	4,2	3,5
14.0	3,6	3,9	3,6	3,8	3,7	3,5
15.0	3,1	3,7	3,2	3,5	3,2	3,2
16.0	2,8	3,3	2,8	3,3	2,8	2,8
18.0	2,1	2,6	2,2	2,6	2,2	2,2
20.0	1,6	2,1	1,7	2,1	1,7	1,7
22.0	1,3	1,8	1,3	1,7	1,3	1,3
24.0	0,9	1,4	1,0	1,4	1,0	1,0
26.0			0,7	1,1	0,7	0,8
28.0				0,9		
SLI - Code	121.0					
Max. permitted wind speed	10 m/s					

\* SLI-Code 120.0 for inclination of the swing-away lattice extension.

3 014 571

	Crane with 3,0 t counterweight (Outrigger span 6,325 x 6,200 m)					
	Lengths of swing-away lattice extension 8,5 m					
	Angle of swing-away lattice extension 20°					
	Main boom - fixed lengths in m					
	18,9	19,0	22,3	22,4	25,6	29,0
Tel. sec. I	1.00	0.00	1.00	0.00	1.00	1.00
Tel. sec. II	0.25	0.75	0.50	1.00	0.75	1.00
Tel. sec. III	0.25	0.75	0.50	1.00	0.75	1.00
Slewing-range	360°					
Radius in m	Lifting capacity in t					
6.0	4,8	4,7				
7.0	4,6	4,5	4,6	4,5		
8.0	4,4	4,3	4,4	4,3	4,4	
9.0	4,2	4,1	4,3	4,2	4,3	3,5
10.0	4,0	3,9	4,1	4,0	4,1	3,5
11.0	3,8	3,8	3,9	3,8	4,0	3,5
12.0	3,7	3,6	3,8	3,7	3,8	3,5
13.0	3,5	3,5	3,7	3,6	3,7	3,5
14.0	3,3	3,4	3,5	3,5	3,6	3,5
15.0	3,1	3,2	3,4	3,3	3,4	3,5
16.0	2,9	3,1	3,0	3,1	3,0	3,0
18.0	2,3	2,7	2,3	2,7	2,4	2,4
20.0	1,7	2,2	1,8	2,2	1,8	1,9
22.0	1,3	1,8	1,4	1,8	1,4	1,5
24.0	1,0	1,5	1,0	1,5	1,1	1,1
26.0			0,8	1,2	0,8	0,8
28.0					0,6	0,6
SLI - Code	121.0					
Max. permitted wind speed	10 m/s					

\* SLI-Code **120.0** for inclination of the swing-away lattice extension.

3 014 572

	Crane with 3,0 t counterweight (Outrigger span 6,325 x 6,200 m)					
	Lengths of swing-away lattice extension 8,5 m					
	Angle of swing-away lattice extension 40°					
	Main boom - fixed lengths in m					
	18,9	19,0	22,3	22,4	25,6	29,0
Tel. sec. I	1.00	0.00	1.00	0.00	1.00	1.00
Tel. sec. II	0.25	0.75	0.50	1.00	0.75	1.00
Tel. sec. III	0.25	0.75	0.50	1.00	0.75	1.00
Slewing-range	360°					
Radius in m	Lifting capacity in t					
8.0	3,4	3,4	3,2			
9.0	3,3	3,2	3,2	3,3	3,3	
10.0	3,1	3,1	3,1	3,1	3,2	3,1
11.0	3,0	3,0	3,0	3,0	3,1	3,1
12.0	2,9	2,9	3,0	2,9	3,0	3,0
13.0	2,9	2,8	2,9	2,9	2,9	2,9
14.0	2,8	2,8	2,9	2,8	2,9	2,9
15.0	2,8	2,8	2,8	2,8	2,8	2,9
16.0	2,7	2,7	2,8	2,8	2,8	2,8
18.0	2,4	2,7	2,5	2,7	2,5	2,5
20.0	1,8	2,3	1,9	2,3	2,0	2,0
22.0			1,5	1,9	1,5	1,6
24.0					1,1	1,2
26.0					0,8	0,9
28.0						0,6
SLI - Code	121.0					
Max. permitted wind speed	10 m/s					

\* SLI-Code **120.0** for inclination of the swing-away lattice extension.

3 014 576

	<b>Crane with 3,0 t Counterweight (Supporting span 6,325 x 6,200 m)</b>					
	<b>Lengths of swing-away lattice extension 8,5 m</b>					
	<b>Angle of telescopic swing-away lattice extension 5° - 20° (Intermediate angle)</b>					
	<b>Main boom - fixed lengths in m</b>					
	18,9	19,0	22,3	22,4	25,6	29,0
Tel. sec. I	1.00	0.00	1.00	0.00	1.00	1.00
Tel. sec. II	0.25	0.75	0.50	1.00	0.75	1.00
Tel. sec. III	0.25	0.75	0.50	1.00	0.75	1.00
Slewing-range	360°					
Radius in m	Lifting capacity in t					
6,0	4,8	4,7				
7,0	4,6	4,5	4,6	4,5		
8,0	4,4	4,3	4,4	4,3	4,4	
9,0	4,2	4,1	4,3	4,2	4,3	3,5
10,0	4,0	3,9	4,1	4,0	4,1	3,5
11,0	3,8	3,8	3,9	3,8	4,0	3,5
12,0	3,7	3,6	3,8	3,7	3,8	3,5
13,0	3,5	3,5	3,7	3,6	3,7	3,5
14,0	3,3	3,4	3,5	3,5	3,6	3,5
15,0	3,1	3,2	3,2	3,3	3,2	3,2
16,0	2,8	3,1	2,8	3,1	2,8	2,8
18,0	2,1	2,6	2,2	2,6	2,2	2,2
20,0	1,6	2,1	1,7	2,1	1,7	1,7
22,0	1,3	1,8	1,3	1,7	1,3	1,3
24,0	0,9	1,4	1,0	1,4	1,0	1,0
26,0			0,7	1,1	0,7	0,8
SLI - Code	121.0					
Max. permitted wind speed	10 m/s					

\* SLI-Code **120.0** for inclination of the telescopic swing-away lattice extension.

\* The swing-away lattice extension must be inclined to the required intermediate angle before the load is lifted.

	Crane with 3,0 t Counterweight (Supporting span 6,325 x 6,200 m)					
	Lengths of swing-away lattice extension 8,5 m					
	Angle of telescopic swing-away lattice extension 20° - 40° (Intermediate angle)					
	Main boom - fixed lengths in m					
	18,9	19,0	22,3	22,4	25,6	29,0
Tel. sec. I	1.00	0.00	1.00	0.00	1.00	1.00
Tel. sec. II	0.25	0.75	.50	1.00	0.75	1.00
Tel. sec. III	.25	0.75	0.50	1.00	0.75	1.00
Slewing-range	360°					
Radius in m	Lifting capacity in t					
8.0	3,4	3,4	3,2			
9.0	3,3	3,2	3,2	3,3	3,3	
10.0	3,1	3,1	3,1	3,1	3,2	3,1
11.0	3,0	3,0	3,0	3,0	3,1	3,1
12.0	2,9	2,9	3,0	2,9	3,0	3,0
13.0	2,9	2,8	2,9	2,9	2,9	2,9
14.0	2,8	2,8	2,9	2,8	2,9	2,9
15.0	2,8	2,8	2,8	2,8	2,8	2,9
16.0	2,7	2,7	2,8	2,8	2,8	2,8
18.0	2,3	2,7	2,3	2,7	2,4	2,4
20.0	1,7	2,2	1,8	2,2	1,8	1,9
22.0			1,4	1,8	1,4	1,5
24.0					1,1	1,1
26.0						0,8
28.0						0,6
SLI - Code	121.0					
Max. permitted windspeed	10 m/s					

\* SLI-Code **120.0** for inclination of the telescopic swing-away lattice extension.

\* The swing-away lattice extension must be inclined to the required intermediate angle before the load is lifted.

3 014 790

	<b>Crane with 3,0 t Counterweight (Supporting span 6,325 x 6,200 m)</b>					
	<b>Lengths of swing-away lattice extension 8,5 m</b>					
	<b>Load which can be luffed in angle range of swing-away lattice extension 5° - 20°</b>					
	Main boom - fixed lengths in m					
	18,9	19,0	22,3	22,4	25,6	29,0
Tel. sec. I	1.00	0.00	1.00	0.00	1.00	1.00
Tel. sec. II	0.25	0.75	0.50	1.00	0.75	1.00
Tel. sec. III	0.25	0.75	0.50	1.00	0.75	1.00
Slewing-range	360°					
Radius in m	Lifting capacity in t					
6.0	2.6	2.6				
7.0	2.5	2.5	2.6	2.6		
8.0	2.3	2.3	2.4	2.4	2.5	
9.0	2.2	2.2	2.3	2.3	2.4	2.5
10.0	2.1	2.1	2.2	2.2	2.3	2.4
11.0	2.0	2.0	2.1	2.1	2.2	2.3
12.0	1.9	1.9	2.0	2.0	2.1	2.2
13.0	1.8	1.8	1.9	1.9	2.0	2.1
14.0	1.8	1.8	1.9	1.9	2.0	2.0
15.0	1.7	1.7	1.8	1.8	1.9	2.0
16.0	1.6	1.6	1.7	1.7	1.8	1.9
18.0	1.5	1.5	1.6	1.6	1.7	1.8
20.0	1.4	1.5	1.5	1.5	1.6	1.6
22.0	1.3	1.3	1.3	1.5	1.3	1.2
24.0	0.9	1.2	1.0	1.4	1.0	1.0
26.0			0.7	1.1	0.7	0.7
SLI - Code	120.0					
Max. permitted wind speed	10 m/s					

\* SLI code **120.0** when inclining the swing-away lattice extension with and without load.

3 014 791

	Crane with 3,0 t Counterweight (Supporting span 6,325 x 6,200 m)					
	Lengths of swing-away lattice extension 8,5 m					
	Load which can be luffed in angle range of swing-away lattice extension 20° - 40°					
	Main boom - fixed lengths in m					
	18,9	19,0	22,3	22,4	25,6	29,0
Tel. sec. I	1.00	0.00	1.00	0.00	1.00	1.00
Tel. sec. II	0.25	0.75	0.50	1.00	0.75	1.00
Tel. sec. III	0.25	0.75	0.50	1.00	0.75	1.00
Slewing-range	360°					
Radius in m	Lifting capacity in t					
8.0	2.0	2.0	2.0			
9.0	1.9	1.9	1.9	1.9	2.0	
10.0	1.8	1.8	1.9	1.9	1.9	1.9
11.0	1.8	1.8	1.8	1.8	1.9	1.9
12.0	1.7	1.7	1.8	1.8	1.8	1.9
13.0	1.7	1.7	1.7	1.7	1.8	1.8
14.0	1.6	1.6	1.7	1.7	1.7	1.8
15.0	1.6	1.6	1.7	1.7	1.7	1.7
16.0	1.6	1.6	1.6	1.6	1.7	1.7
18.0	1.5	1.5	1.6	1.6	1.6	1.6
20.0	1.5	1.5	1.5	1.5	1.6	1.6
22.0			1.4	1.5	1.4	1.4
24.0					1.1	1.1
26.0					0.8	0.8
28.0						0.6
SLI - Code	120.0					
Max. permitted wind speed	10 m/s					

\* SLI code **120.0** when inclining the swing-away lattice extension with and without load.

3 014 573

Crane with 3,0 t counterweight (Outrigger span 6,325 x 6,200 m)						
Lengths of swing-away lattice extension 15,0 m						
Angle of swing-away lattice extension 5°						
Main boom - fixed lengths in m						
	18,9	19,0	22,3	22,4	25,6	29,0
Tel. sec. I	1.00	0.00	1.00	0.00	1.00	1.00
Tel. sec. II	0.25	0.75	0.50	1.00	0.75	1.00
Tel. sec. III	0.25	0.75	0.50	1.00	0.75	1.00
Slewing-range	360°					
Radius in m	Lifting capacity in t					
6.0	3,3	3,3				
7.0	3,3	3,3	3,1	2,7	2,5	
8.0	3,3	3,3	3,1	2,7	2,5	2,0
9.0	3,2	3,1	3,0	2,7	2,5	2,0
10.0	3,0	2,9	2,9	2,7	2,5	2,0
11.0	2,7	2,7	2,8	2,7	2,5	2,0
12.0	2,6	2,5	2,7	2,6	2,5	2,0
13.0	2,5	2,4	2,5	2,5	2,5	2,0
14.0	2,3	2,3	2,4	2,4	2,5	2,0
15.0	2,2	2,2	2,3	2,3	2,4	2,0
16.0	2,1	2,1	2,2	2,2	2,3	2,0
18.0	1,9	1,9	2,0	2,0	2,1	2,0
20.0	1,8	1,8	1,9	1,9	2,0	2,0
22.0	1,6	1,6	1,6	1,7	1,6	1,6
24.0	1,3	1,5	1,3	1,6	1,3	1,2
26.0	1,0	1,4	1,0	1,4	1,0	1,0
28.0	0,8	1,2	0,8	1,1	0,8	0,7
30.0					0,6	0,6
SLI - Code	131.0					
Max. permitted wind speed	10m/s					

\* SLI-Code 130.0 for inclination of the swing-away lattice extension.

3 014 574

	Crane with 3,0 t counterweight (Outrigger span 6,325 x 6,200 m)					
	Lengths of swing-away lattice extension 15,0 m					
	Angle of swing-away lattice extension 20°					
	Main boom - fixed lengths in m					
	18,9	19,0	22,3	22,4	25,6	29,0
Tel. sec. I	1.00	0.00	1.00	0.00	1.00	1.00
Tel. sec. II	0.25	0.75	0.50	1.00	0.75	1.00
Tel. sec. III	0.25	0.75	0.50	1.00	0.75	1.00
Slewing-range	360°					
Radius in m	Lifting capacity in t					
9.0	2,4					
10.0	2,3	2,2	2,3			
11.0	2,1	2,1	2,2	2,1	2,2	
12.0	2,1	2,0	2,1	2,1	2,1	2,0
13.0	2,0	2,0	2,0	2,0	2,0	2,0
14.0	1,9	1,9	1,9	1,9	2,0	2,0
15.0	1,8	1,8	1,9	1,8	1,9	1,9
16.0	1,8	1,7	1,8	1,8	1,8	1,9
18.0	1,7	1,6	1,7	1,7	1,7	1,8
20.0	1,5	1,5	1,6	1,6	1,6	1,7
22.0	1,5	1,5	1,5	1,5	1,6	1,6
24.0	1,4	1,4	1,4	1,4	1,4	1,4
26.0	1,1	1,3	1,1	1,4	1,1	1,2
28.0	0,9	1,2	0,9	1,2	0,9	0,9
30.0	0,6	1,0	0,7	1,0	0,7	0,7
32.0				0,8		
SLI - Code	131.0					
Max. permitted wind speed	10 m/s					

\* SLI-Code 130.0 for inclination of the swing-away lattice extension.

3 014 575

	Crane with 3,0 t counterweight (Outrigger span 6,325 x 6,200 m)					
	Lengths of swing-away lattice extension 15,0 m					
	Angle of swing-away lattice extension 40°					
	Main boom - fixed lengths in m					
	18,9	19,0	22,3	22,4	25,6	29,0
Tel. sec. I	1.00	0.00	1.00	0.00	1.00	1.00
Tel. sec. II	0.25	0.75	0.50	1.00	0.75	1.00
Tel. sec. III	0.25	0.75	0.50	1.00	0.75	1.00
Slewing-range	360°					
Radius in m	Lifting capacity in t					
13.0	1,6	1,6				
14.0	1,6	1,6	1,6	1,6		
15.0	1,5	1,5	1,5	1,5	1,6	
16.0	1,5	1,5	1,5	1,5	1,5	1,5
18.0	1,4	1,4	1,4	1,4	1,5	1,5
20.0	1,4	1,4	1,4	1,4	1,4	1,4
22.0	1,3	1,3	1,3	1,3	1,4	1,4
24.0	1,3	1,3	1,3	1,3	1,3	1,4
26.0	1,2	1,3	1,3	1,3	1,3	1,3
28.0			1,0	1,3	1,0	1,0
30.0			0,7	1,0	0,8	0,8
32.0						0,6
SLI - Code	131.0					
Max. permitted wind speed	10 m/s					

\* SLI-Code 130.0 for inclination of the swing-away lattice extension.

	Crane with 3,0 t Counterweight (Supporting span 6,325 x 6,200 m)					
	Lengths of swing-away lattice extension 15,0 m					
	Angle of telescopic swing-away lattice extension 5° - 20° (Intermediate angle)					
	Main boom - fixed lengths in m					
	18,9	19,0	22,3	22,4	25,6	29,0
Tel. sec. I	1.00	0.00	1.00	0.00	1.00	1.00
Tel. sec. II	0.25	0.75	0.50	1.00	0.75	1.00
Tel. sec. III	0.25	0.75	0.50	1.00	0.75	1.00
Slewing-range	360°					
Radius in m	Lifting capacity in t					
9.0	2,4					
10.0	2,3	2,2	2,3			
11.0	2,1	2,1	2,2	2,1	2,2	
12.0	2,1	2,0	2,1	2,1	2,1	2,1
13.0	2,0	2,0	2,0	2,0	2,0	2,0
14.0	1,9	1,9	1,9	1,9	2,0	2,0
15.0	1,8	1,8	1,9	1,8	1,9	1,9
16.0	1,8	1,7	1,8	1,8	1,8	1,9
18.0	1,7	1,6	1,7	1,7	1,7	1,8
20.0	1,5	1,5	1,6	1,6	1,6	1,7
22.0	1,5	1,5	1,5	1,5	1,6	1,6
24.0	1,3	1,4	1,3	1,4	1,3	1,2
26.0	1,0	1,3	1,0	1,4	1,0	1,0
28.0	0,8	1,2	0,8	1,1	0,8	0,7
30.0	0,6	1,0	0,6	0,9	0,6	0,6
32.0				0,7		
34.0				0,6		
SLI - Code	131.0					
Max. permitted wind speed	10 m/s					

\* SLI-Code **130.0** for inclination of the telescopic swing-away lattice extension.

\* The swing-away lattice extension must be inclined to the required intermediate angle before the load is lifted.

3 014 579

	Crane with 3,0 t Counterweight (Supporting span 6,325 x 6,200 m)					
	Lengths of swing-away lattice extension 15,0 m					
	Angle of telescopic swing-away lattice extension 20° - 40° (Intermediate angle)					
	Main boom - fixed lengths in m					
	18,9	19,0	22,3	22,4	25,6	29,0
Tel. sec. I	1.00	0.00	1.00	0.00	1.00	1.00
Tel. sec. II	0.25	.75	0.50	1.00	0.75	1.00
Tel. sec. III	0.25	0.75	0.50	1.00	0.75	1.00
Slewing-range	360°					
Radius in m	Lifting capacity in t					
13.0	1,6	1,6				
14.0	1,6	1,6	1,6	1,6		
15.0	1,5	1,5	1,5	1,5	1,6	
16.0	1,5	1,5	1,5	1,5	1,5	1,5
18.0	1,4	1,4	1,4	1,4	1,5	1,5
20.0	1,4	1,4	1,4	1,4	1,4	1,4
22.0	1,3	1,3	1,3	1,3	1,4	1,4
24.0	1,3	1,3	1,3	1,3	1,3	1,4
26.0	1,1	1,3	1,1	1,3	1,1	1,2
28.0	0,9	1,2	0,9	1,2	0,9	0,9
30,0			0,7	1,0	0,7	0,7
SLI - Code	131.0					
Max. permitted wind speed	10 m/s					

\* SLI-Code **130.0** for inclination of the telescopic swing-away lattice extension.

\* The swing-away lattice extension must be inclined to the required intermediate angle before the load is lifted.

	Crane with 3,0 t Counterweight (Supporting span 6,325 x 6,200 m)					
	Lengths of swing-away lattice extension 15,0 m					
	Load which can be luffed in angle range of swing-away lattice extension 5° - 20°					
	Main boom - fixed lengths in m					
	18,9	19,0	22,3	22,4	25,6	29,0
Tel. sec. I	1.00	0.00	1.00	0.00	1.00	1.00
Tel. sec. II	0.25	0.75	0.50	1.00	0.75	1.00
Tel. sec. III	0.25	0.75	0.50	1.00	0.75	1.00
Slewing-range	360°					
Radius in m	Lifting capacity in t					
9.0	1.4					
10.0	1.3	1.3	1.3			
11.0	1.2	1.2	1.3	1.3	1.3	
12.0	1.1	1.1	1.2	1.2	1.2	1.3
13.0	1.1	1.1	1.1	1.1	1.2	1.2
14.0	1.0	1.0	1.1	1.1	1.1	1.2
15.0	1.0	1.0	1.0	1.0	1.1	1.1
16.0	0.9	0.9	1.0	1.0	1.0	1.1
18.0	0.9	0.9	0.9	0.9	1.0	1.0
20.0	0.8	0.8	0.8	0.9	0.9	0.9
22.0	0.7	0.7	0.8	0.8	0.8	0.9
24.0	0.7	0.7	0.7	0.7	0.8	0.8
26.0	0.6	0.6	0.7	0.7	0.7	0.8
28.0	0.6	0.6	0.7	0.7	0.7	0.7
30.0					0.6	
SLI - Code	130.0					
Max. permitted wind speed	10 m/s					

\* SLI code **130.0** when inclining the swing-away lattice extension with and without load.

	<b>Crane with 3,0 t Counterweight (Supporting span 6,325 x 6,200 m)</b>					
	<b>Lengths of swing-away lattice extension 15,0 m</b>					
	<b>Load which can be luffed in angle range of swing-away lattice extension 20° - 40°</b>					
	<b>Main boom - fixed lengths in m</b>					
	18,9	19,0	22,3	22,4	25,6	29,0
Tel. sec. I	1.00	0.00	1.00	0.00	1.00	1.00
Tel. sec. II	0.25	0.75	0.50	1.00	0.75	1.00
Tel. sec. III	0.25	0.75	0.50	1.00	0.75	1.00
Slewing-range	360°					
Radius in m	Lifting capacity in t					
13.0	0.9	0.9				
14.0	0.9	0.9	0.9	0.9		
15.0	0.9	0.9	0.9	0.9	0.9	
16.0	0.8	0.8	0.9	0.9	0.9	0.9
18.0	0.8	0.8	0.8	0.8	0.8	0.9
20.0	0.8	0.8	0.8	0.8	0.8	0.8
22.0	0.7	0.7	0.7	0.7	0.8	0.8
24.0	0.7	0.7	0.7	0.7	0.7	0.8
26.0	0.7	0.7	0.7	0.7	0.7	0.7
28.0			0.7	0.7	0.7	0.7
30.0			0.6	0.6	0.7	0.6
SLI - Code	<b>130.0</b>					
Max. permitted wind speed	<b>10 m/s</b>					

\* SLI code **130.0** when inclining the swing-away lattice extension with and without load.





A GROVE WORLDWIDE COMPANY

**Deutsche GROVE® GmbH**

Postfach 18 53 \* D - 26358 Wilhelmshaven  
Industriegelände West \* D - 26389 Wilhelmshaven  
Telefon (04421) 294 - 0  
Telex 253354 \* Telefax (04421) 29 43 01